

Parkheath

Sold on Service

Belsize Road NW6

£335 per week



Large ground level apartment

Modern building

Inclusive of water rates

Open plan kitchen/dining area

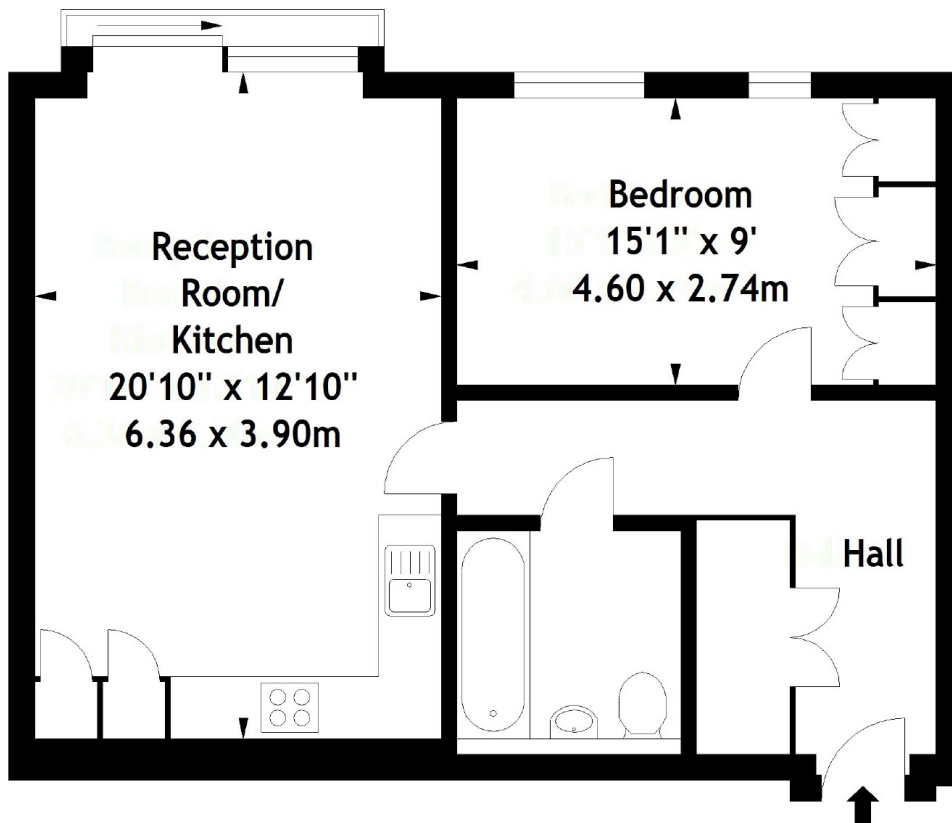
Juliette balcony

Moments to Swiss Cottage

West Hampstead Office 020 7794 7111

South Hampstead Office 020 7625 4567

Oakland House,
Belsize Road,
South Hampstead, NW6
Approx. Gross Internal Area
589 Sq Ft - 54.73 Sq M



Ground Floor

Measured in accordance with RICS guidelines. Every attempt is made to ensure accuracy, however all measurements are approximate.

This floor plan is for illustrative purposes only and is not to scale.

© Datography Ltd 2017

Photographs * Floorplans * Virtual Tours

Tel: 0845 643 4401 www.datography.com

Administration fees apply

The particulars do not constitute part of an offer or contract. The particulars, including text, photographs and plans, are for the guidance only of prospective purchasers/tenants and must not be relied upon as statements of fact. The descriptions provided therein represent the opinion of the author and whilst given in good faith should not be construed as statements of fact. Nothing in these particulars shall be deemed a statement that the property is in good condition or otherwise or that any services or facilities are in good working order. All measurements are approximate.