

Parkheath

Sold on Service

Fordwych Road NW2

£1,800 PCM (£415 per week) - Camden Band C



One-bedroom apartment in a period building

Wooden floors

Bright south-west facing aspect

Bedroom with fitted storage

Excellent transport links: Kilburn, Brondesbury & West Hampstead

Second-floor position

New double-glazed windows

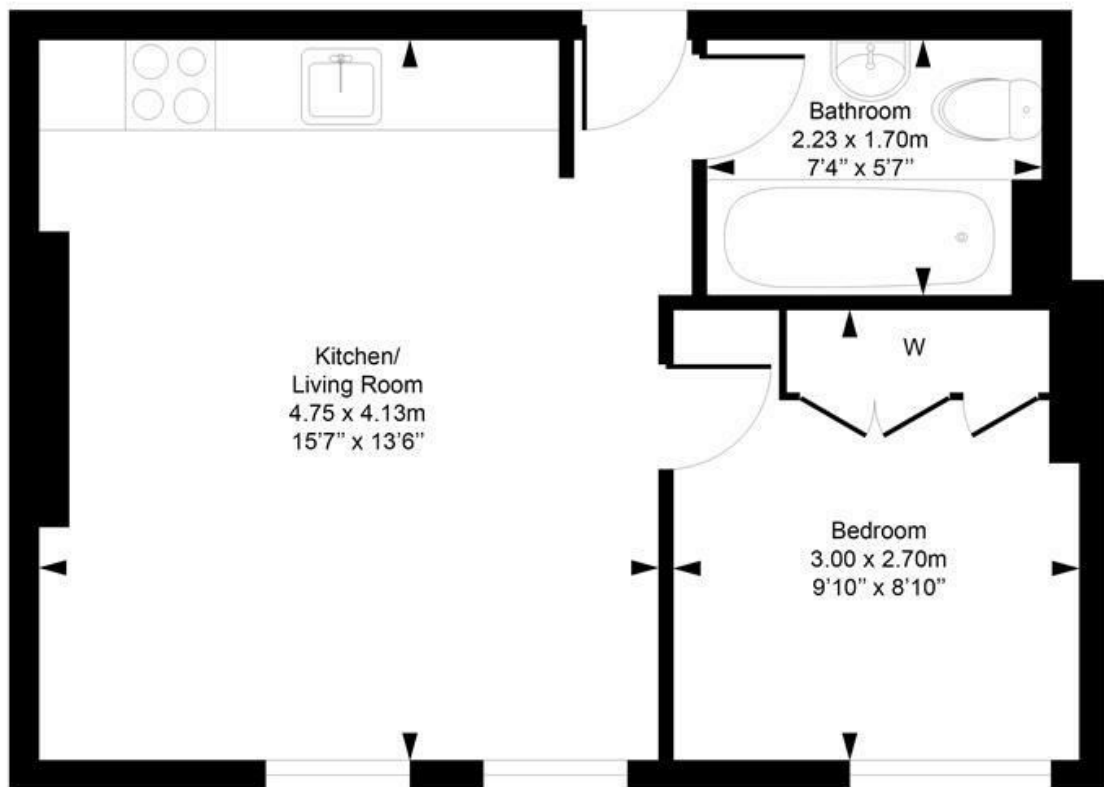
Open-plan reception with newly fitted kitchen

Access to communal garden

EPC: Rating C, Council Tax: Camden band C

West Hampstead Office 020 7794 7111

Fordwych Road
Approximate Gross Internal Area = 33 Sq m / 353 sq ft



Second Floor

This plan is for layout guidance only. Drawn in accordance with RICS guidelines. Not drawn to scale unless stated. Windows & door openings are approximate. Whilst every care is taken in the preparation of this plan, please check all dimensions, shapes & compass bearings before marking any decisions reliant upon them.

ELLIE CLAIRE PHOTOGRAPHY LTD
www.ellieclairephotography.com

The particulars do not constitute part of an offer or contract. The particulars, including text, photographs and plans, are for the guidance only of prospective purchasers/tenants and must not be relied upon as statements of fact. The descriptions provided therein represent the opinion of the author and whilst given in good faith should not be construed as statements of fact. Nothing in these particulars shall be deemed a statement that the property is in good condition or otherwise or that any services or facilities are in good working order. All measurements are approximate