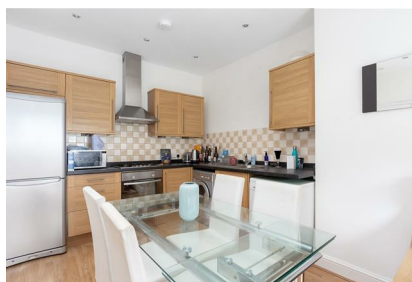


Parkheath

Sold on Service

Hilltop Road NW6

£2,427 PCM (£560 per week) - Camden Band D



2 double bedroom apartment

Second floor of an attractive period conversion

Reception room with wood flooring

Bathroom/WC

Central West Hampstead location

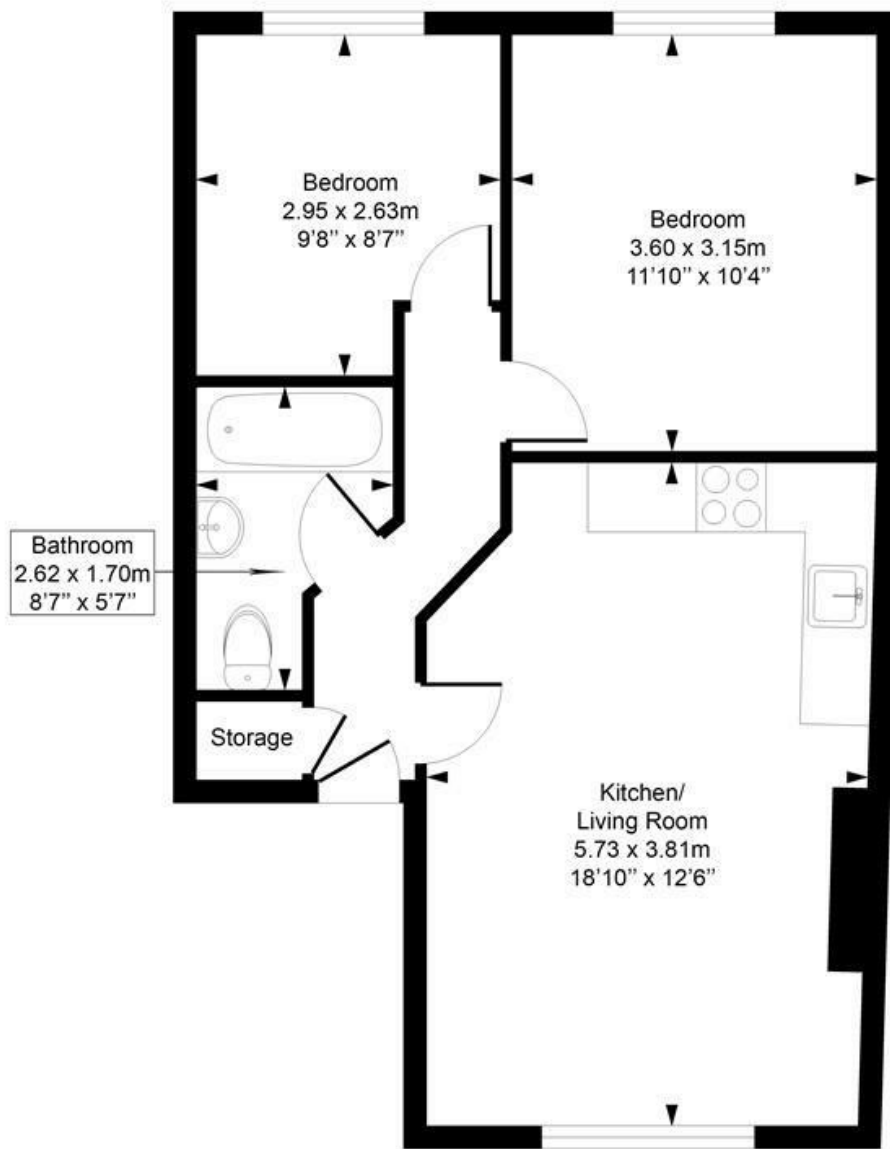
Moments from transport links and local amenities

Open plan fitted kitchen

EPC: Rating C, Council Tax: Camden band D

West Hampstead Office 020 7794 7111

Hilltop Road
Approximate Gross Internal Area = 49 Sq m / 528 sq ft



Second Floor

This plan is for layout guidance only. Drawn in accordance with RICS guidelines. Not drawn to scale unless stated. Windows & door openings are approximate. Whilst every care is taken in the preparation of this plan, please check all dimensions, shapes & compass bearings before marking any decisions reliant upon them.

ELLIE CLAIRE PHOTOGRAPHY LTD
www.ellieclairephotography.com

The particulars do not constitute part of an offer or contract. The particulars, including text, photographs and plans, are for the guidance only of prospective purchasers/tenants and must not be relied upon as statements of fact. The descriptions provided therein represent the opinion of the author and whilst given in good faith should not be construed as statements of fact. Nothing in these particulars shall be deemed a statement that the property is in good condition or otherwise or that any services or facilities are in good working order. All measurements are approximate