

Parkheath

Sold on Service

Loveridge Road NW6

£1,985 PCM (£458 per week) - Camden Band D



Bright first floor flat within a period conversion

Private terrace, a good-sized outdoor space, perfect for relaxing

Shower room/WC

Kilburn Underground (Jubilee Line) – just a few minutes' walk

West End Lane – shops, cafés, and amenities all within easy walking distance

West Hampstead Office 020 7794 7111

Reception room with open-plan fitted kitchen

One double bedroom and one single bedroom/study

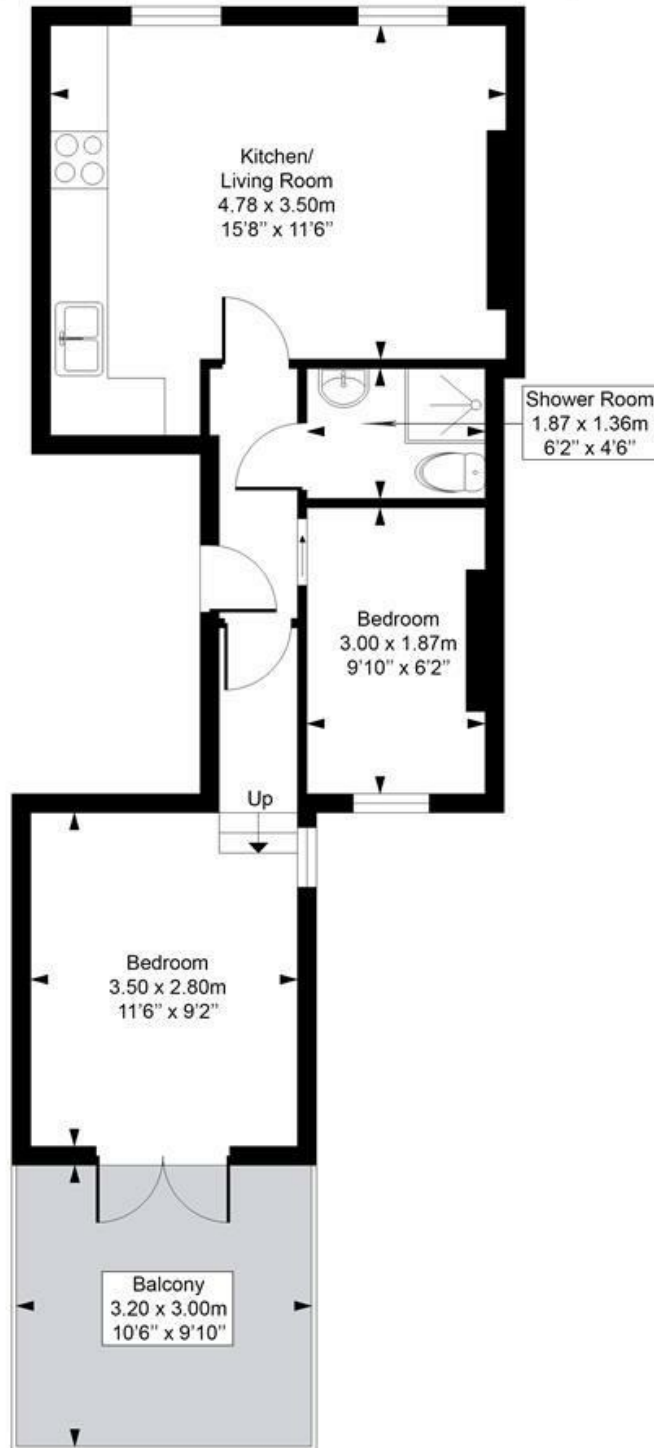
Double-glazed windows

Brondesbury Overground & West Hampstead
Thameslink – excellent connections

EPC: Rating C, Council Tax: Camden, Band D

Loveridge Road

Approximate Gross Internal Area = 40.8 Sq m / 440 sq ft



First Floor

This plan is for layout guidance only. Drawn in accordance with RICS guidelines. Not drawn to scale unless stated. Windows & door openings are approximate. Whilst every care is taken in the preparation of this plan, please check all dimensions, shapes & compass bearings before marking any decisions reliant upon them.

ELLIE CLAIRE PHOTOGRAPHY LTD
www.ellieclairephotography.com

The particulars do not constitute part of an offer or contract. The particulars, including text, photographs and plans, are for the guidance only of prospective purchasers/tenants and must not be relied upon as statements of fact. The descriptions provided therein represent the opinion of the author and whilst given in good faith should not be construed as statements of fact. Nothing in these particulars shall be deemed a statement that the property is in good condition or otherwise or that any services or facilities are in good working order. All measurements are approximate