

Parkheath

Sold on Service

Naseby Close NW6

£7,500 PCM (£1,731 per week) - Camden Band G



Superb 4 bedroom family home spanning 2300 sq ft / 220 sq m

Stunning bespoke kitchen with underfloor heating

Secluded south-west facing patio garden

Three stylish bathrooms, two of which are en suite

Close to Swiss Cottage & South Hampstead stations

Refurbished and modernised to a high standard throughout

Bright open-plan dining area ideal for entertaining

First-floor reception room with peaceful outlook

Off-street parking for one car

EPC: Rating D, Council Tax: Camden, Band G

West Hampstead Office 020 7794 7111



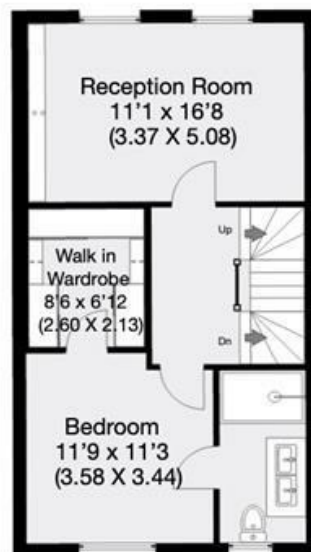
Naseby Close London, NW6

Approximate Gross Internal Area With Restricted Area 220 sqm / 2369 sqft

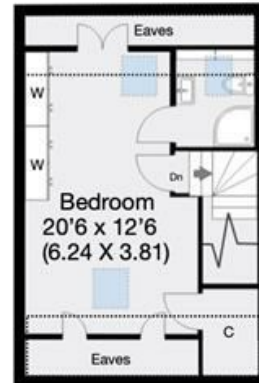
Approximate Gross Internal Area Without Restricted Area 200 sqm / 2153 sqft



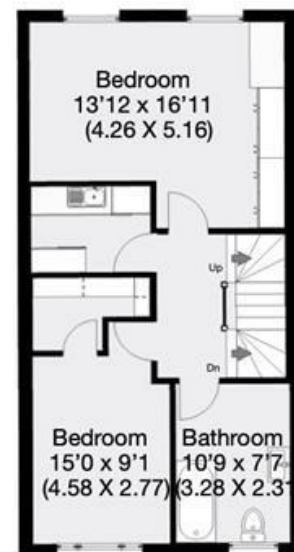
Ground Floor



First Floor



Third Floor



Second Floor

THIS FLOOR PLAN IS PRODUCED FOR PARKHEATH SUBMITTED BY ARCHIMEDIA web: www.archi-media.co.uk

Whilst every attempt has been made to ensure the accuracy of the floor plan contained here, measurements of doors, windows and rooms are approximate and no responsibility is taken for any error, omission or misstatement. These plans are for representation purposes only and should be used as such by any prospective buyer or lease. Specifically no guarantee is given on the gross internal floor area of the property if quoted on this plan and any figures given is initial guidance only and should be treated as such.

The particulars do not constitute part of an offer or contract. The particulars, including text, photographs and plans, are for the guidance only of prospective purchasers/tenants and must not be relied upon as statements of fact. The descriptions provided therein represent the opinion of the author and whilst given in good faith should not be construed as statements of fact. Nothing in these particulars shall be deemed a statement that the property is in good condition or otherwise or that any services or facilities are in good working order. All measurements are approximate.