

Parkheath

Sold on Service

Priory Road NW6

£2,400 PCM (£554 per week) - Camden Band D



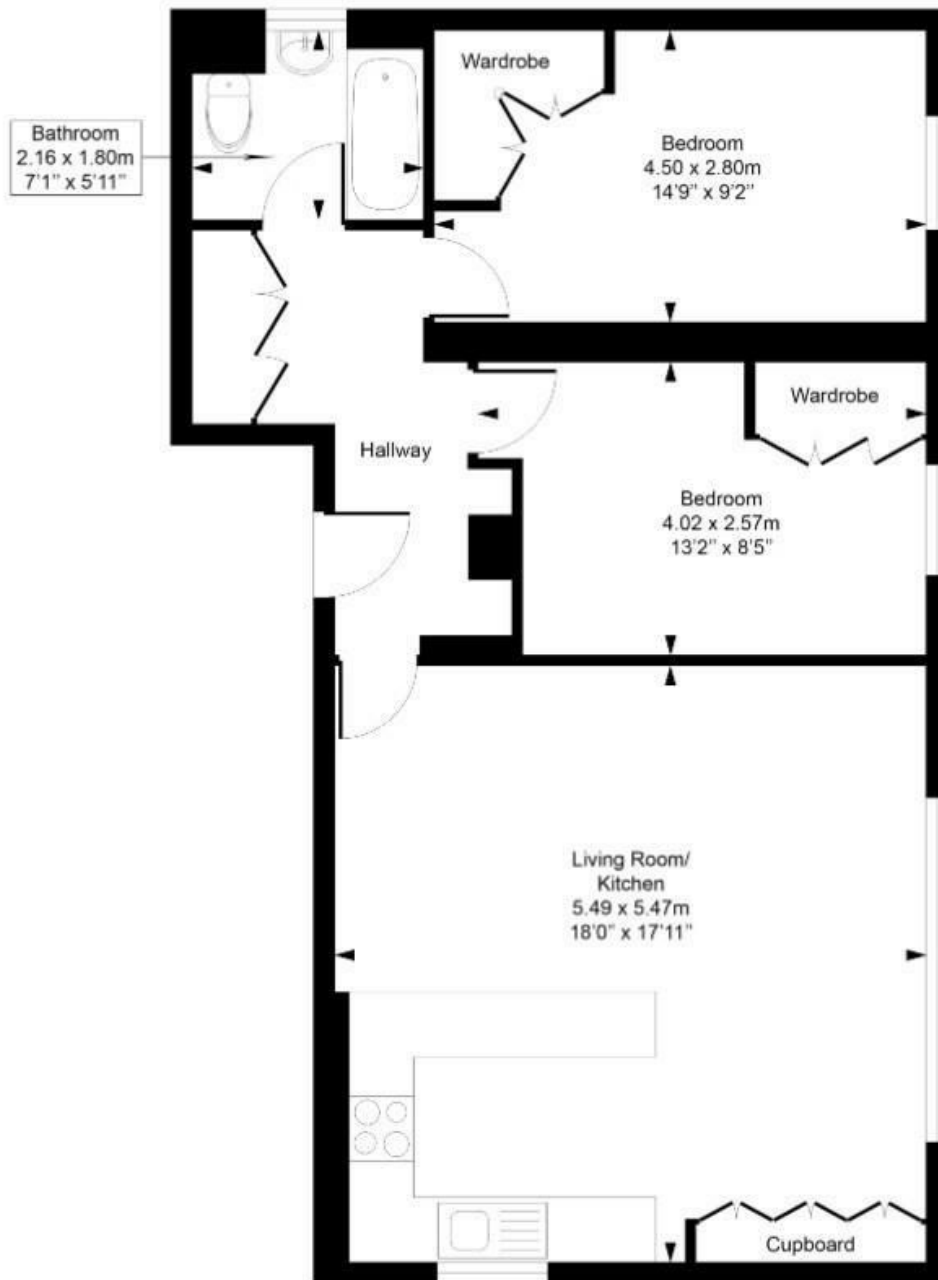
Bright and spacious 2 bedroom apartment
Top floor (3rd) within small purpose built block
Open plan kitchen with dishwasher
Bathroom/WC
Approx. 0.5 miles to West Hampstead underground station

Newly decorated
Attractive reception room with wood flooring
Fitted wardrobes in both bedrooms
Hallway with built in storage and washing machine
EPC: Rating C, Council Tax: Camden band D

West Hampstead Office 020 7794 7111

Priory Road

Approximate Gross Internal Area = 66.9 Sq m / 720 sq ft



Third Floor

Measured in accordance with RICS guidelines. Every attempt is made to ensure accuracy

However all measurements are approximate.

The floor plan is illustrative purposes only and is not to scale

ELLIE CLAIRE PHOTOGRAPHY LTD

www.ellieclairephotography.com

The particulars do not constitute part of an offer or contract. The particulars, including text, photographs and plans, are for the guidance only of prospective purchasers/tenants and must not be relied upon as statements of fact. The descriptions provided therein represent the opinion of the author and whilst given in good faith should not be construed as statements of fact. Nothing in these particulars shall be deemed a statement that the property is in good condition or otherwise or that any services or facilities are in good working order. All measurements are approximate