

# Parkheath

*Sold on Service*

---

**Dennington Park Road NW6**

**£3,500 PCM (£808 per week) - Camden Band E**



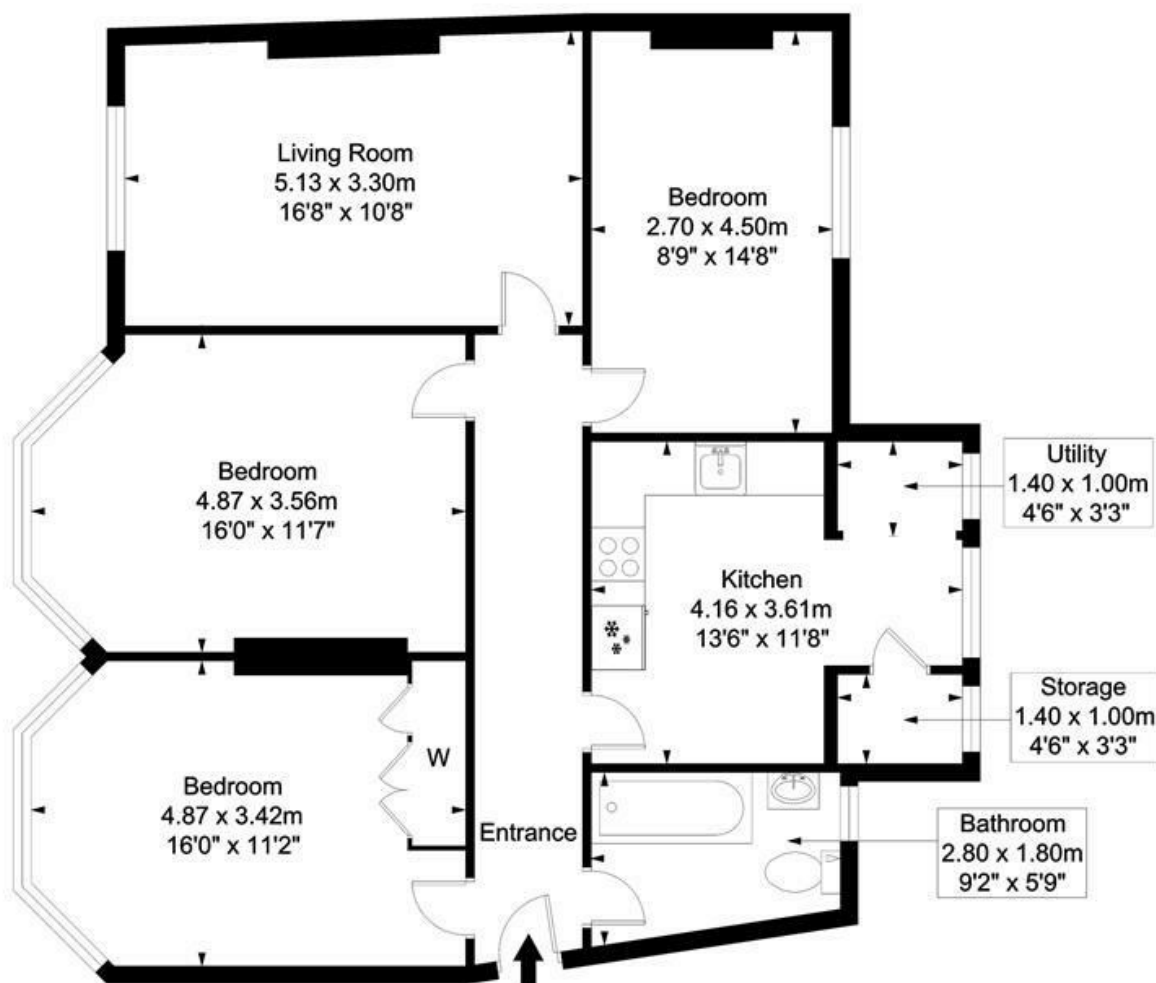
Spacious 3 double bedroom apartment  
Located in the heart of West Hampstead  
Kitchen/diner with utility cupboard  
Suitable for three professional sharers  
Just a short walk from West Hampstead's  
transport links

2nd floor of a well-located mansion block  
Approx. 1082 Sq Ft / 100.50 Sq M  
Generous reception room  
Moments from local shops, cafes, and amenities  
EPC: Rating C, Council Tax: Camden band E

West Hampstead Office 020 7794 7111

## Dennington Park Road

Approximate Gross Internal Floor Area = 100.50 SQ M / 1082 SQ FT



### Second Floor

This plan is for layout guidance only. Drawn in accordance with RICS guidelines. Not drawn to scale unless stated. Windows & door openings are approximate. Whilst every care is taken in the preparation of this plan, please check all dimensions, shapes & compass bearings before marking any decisions reliant upon them.

ELLIE CLAIRE PHOTOGRAPHY LTD  
[www.ellieclairephotography.com](http://www.ellieclairephotography.com)

The particulars do not constitute part of an offer or contract. The particulars, including text, photographs and plans, are for the guidance only of prospective purchasers/tenants and must not be relied upon as statements of fact. The descriptions provided therein represent the opinion of the author and whilst given in good faith should not be construed as statements of fact. Nothing in these particulars shall be deemed a statement that the property is in good condition or otherwise or that any services or facilities are in good working order. All measurements are approximate