

Parkheath

Sold on Service

Wavel Mews NW6

£4,300 PCM (£992 per week) - Camden Band F



An exceptional mews house, meticulously refurbished

Two spacious double bedrooms, each with en-suite bathrooms

Ground floor with warm wood flooring with underfloor heating

Striking electric skylight opening to a private roof garden

Ideally positioned between West End Lane and Finchley Road

Nestled in a tranquil pocket of South Hampstead

Stunning open-plan living space featuring a sleek, fully integrated kitchen

Bespoke joinery throughout

Stylish guest cloakroom

EPC Rating: C, Council Tax: Camden Band F

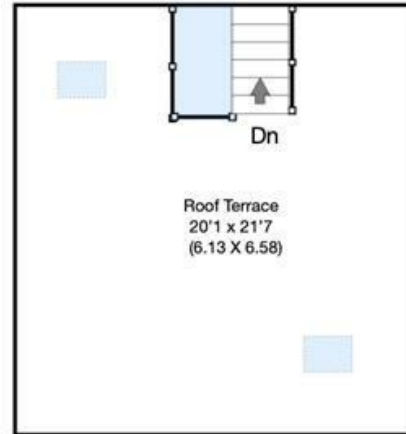
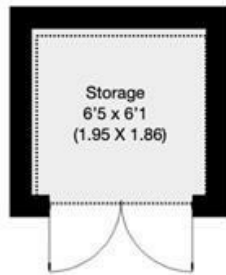
West Hampstead Office 020 7794 7111



Wavel Mews, London, NW6

Approximate Gross Internal Area (Excl. Storage) 84.6 sqm / 911 sqft

Approximate Gross Internal Area (Incl. Storage) 89 sqm / 958 sqft



Second Floor



Ground Floor



First Floor

THIS FLOOR PLAN IS PRODUCED FOR PARKHEATH SUBMITTED BY

ARCHIMEDIA

web: www.archi-media.co.uk

Whilst every attempt has been made to ensure the accuracy of the floor plan contained here, measurements of doors, windows and rooms are approximate and no responsibility is taken for any error, omission or misstatement. These plans are for representation purposes only and should be used as such by any prospective buyer or lease. Specifically no guarantee is given on the gross internal floor area of the property if quoted on this plan and any figures given is initial guidance only and should be treated as such.

The particulars do not constitute part of an offer or contract. The particulars, including text, photographs and plans, are for the guidance only of prospective purchasers/tenants and must not be relied upon as statements of fact. The descriptions provided therein represent the opinion of the author and whilst given in good faith should not be construed as statements of fact. Nothing in these particulars shall be deemed a statement that the property is in good condition or otherwise or that any services or facilities are in good working order. All measurements are approximate