

# Parkheath

*Sold on Service*

---

**Sumatra Road NW6**

**£1,750 PCM (£404 per week) - Camden Band C**



Spacious 1 bedroom apartment

Wood flooring throughout

Bathroom/WC

Unfurnished

Ground floor with private entrance

Reception/dining room with open plan fitted kitchen

Ideally located for local amenities and independent shops on Mill Lane

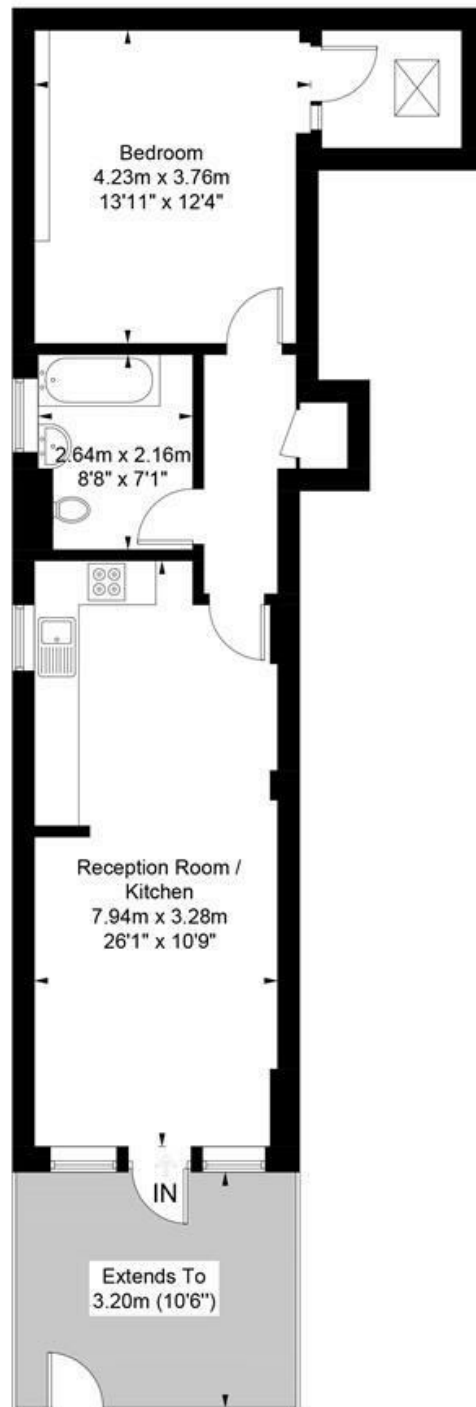
EPC: Rating C, Council Tax: Camden band C

West Hampstead Office 020 7794 7111

# Sumatra Road



Approximate Gross Internal Area = 55.6 sq m / 598 sq ft



## Ground Floor

Illustration for identification purposes only, measurements are approximate,  
not to scale. FloorplansUsketch.com © 2018 (ID403440)  
ELLIE CLAIRE PHOTOGRAPHY LTD

The particulars do not constitute part of an offer or contract. The particulars, including text, photographs and plans, are for the guidance only of prospective purchasers/tenants and must not be relied upon as statements of fact. The descriptions provided therein represent the opinion of the author and whilst given in good faith should not be construed as statements of fact. Nothing in these particulars shall be deemed a statement that the property is in good condition or otherwise or that any services or facilities are in good working order. All measurements are approximate