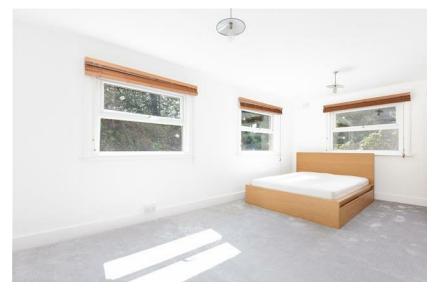


Parkheath

Sold on Service

Greencroft Gardens NW6

£3,500 PCM (£808 per week) - Camden Band F



Spacious and attractive ground floor apartment

South Hampstead conservation area

Reception room with wood flooring

Access to a communal garden

Approx 6-minute walk to Finchley Road underground station

1605 Sq Ft / 149.10 Sq M

3 generous bedrooms

Modern bathroom plus separate shower room

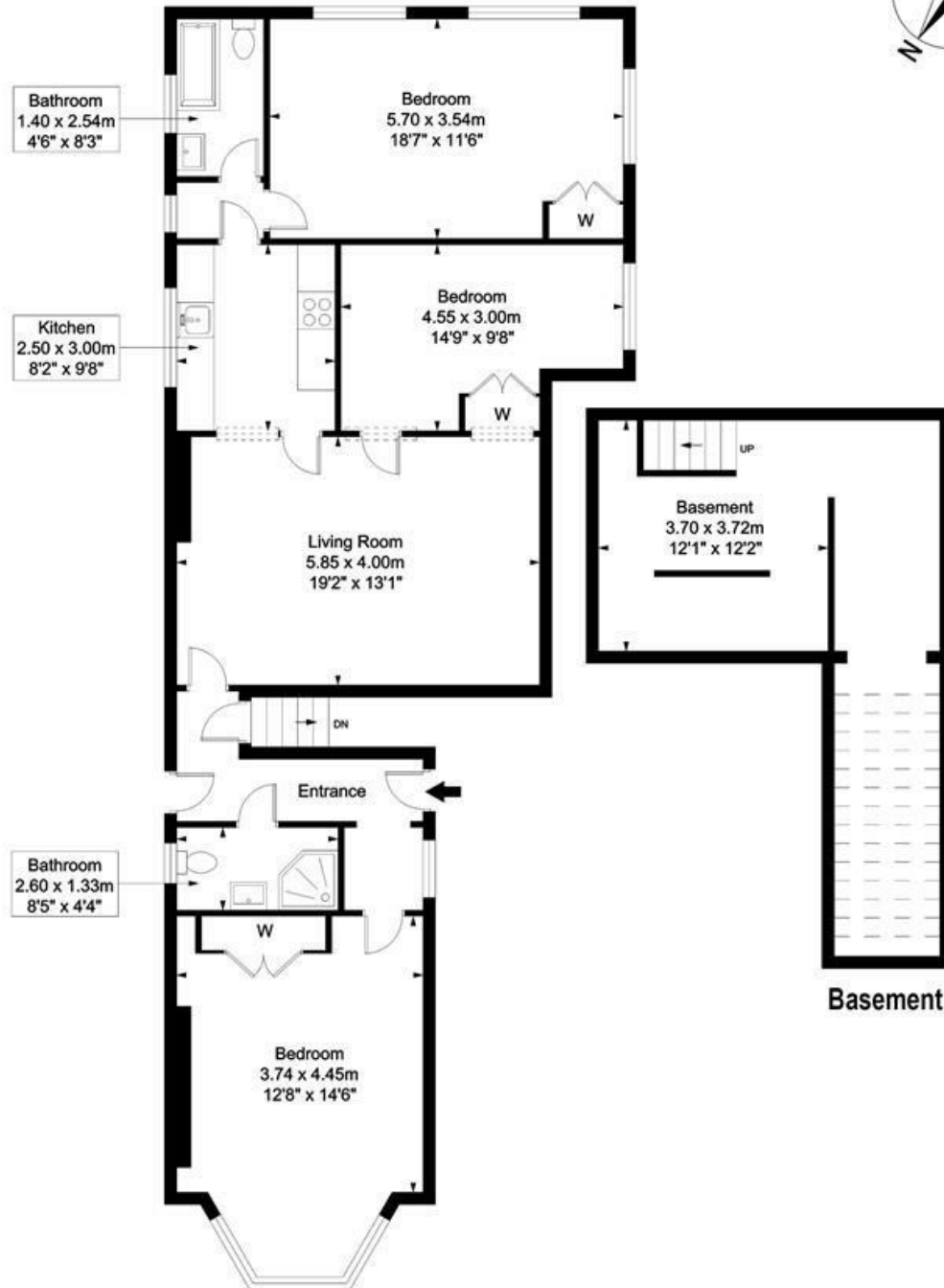
Located in a desirable residential area

EPC: Rating D, Council Tax: Camden Band F

West Hampstead Office 020 7794 7111

Greencroft Gardens

Approximate Gross Internal Floor Area = 149.10 SQ M / 1605 SQ FT



Ground Floor

This plan is for layout guidance only. Drawn in accordance with RICS guidelines. Not drawn to scale unless stated. Windows & door openings are approximate. Whilst every care is taken in the preparation of this plan, please check all dimensions, shapes & compass bearings before marking any decisions reliant upon them.

ELLIE CLAIRE PHOTOGRAPHY LTD
www.ellieclairephotography.com

The particulars do not constitute part of an offer or contract. The particulars, including text, photographs and plans, are for the guidance only of prospective purchasers/tenants and must not be relied upon as statements of fact. The descriptions provided therein represent the opinion of the author and whilst given in good faith should not be construed as statements of fact. Nothing in these particulars shall be deemed a statement that the property is in good condition or otherwise or that any services or facilities are in good working order. All measurements are approximate