

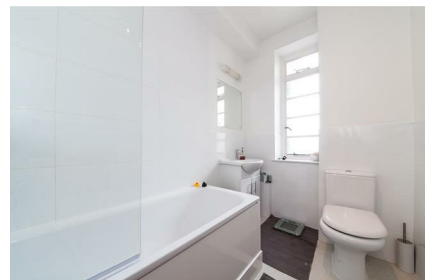
# Parkheath

*Sold on Service*

---

**Finchley Road NW3**

**£2,100 PCM (£485 per week) - Camden Band D**



Spacious and well-proportioned 1 bedroom apartment  
610 Sq Ft / 56.67 Sq M

Ideally positioned for Finchley Road and Swiss Cottage  
amenities & transport links

Large reception/dining room

Communal heating and hot water included (Heating is  
seasonally controlled)

West Hampstead Office 020 7794 7111

Sought after portered building with lift access

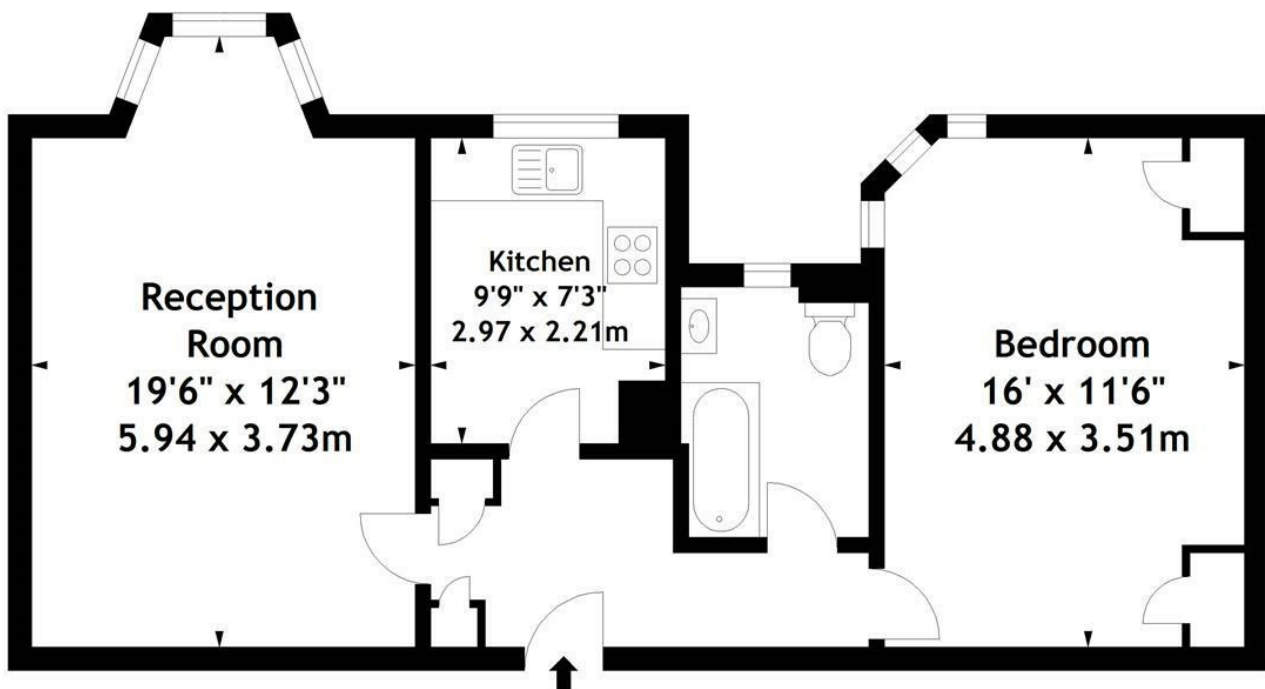
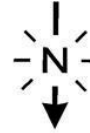
Situated on the 6th floor

Just footsteps to Finchley Road underground (Jubilee  
and Metropolitan Lines)

Separate fitted kitchen, which includes a dishwasher

EPC: Rating C, Council Tax: Camden Band D

**St. Johns Court,  
Finchley Road, NW3  
Approx. Gross Internal Area  
610 Sq Ft - 56.67 Sq M**



**Sixth Floor**

Measured in accordance with RICS guidelines. Every attempt is made to ensure accuracy, however all measurements are approximate.

This floor plan is for illustrative purposes only and is not to scale.

© Datagraphy Ltd 2017

Photographs \* Floorplans \* Virtual Tours  
Tel: 0845 643 4401 [www.datagraphy.com](http://www.datagraphy.com)

The particulars do not constitute part of an offer or contract. The particulars, including text, photographs and plans, are for the guidance only of prospective purchasers/tenants and must not be relied upon as statements of fact. The descriptions provided therein represent the opinion of the author and whilst given in good faith should not be construed as statements of fact. Nothing in these particulars shall be deemed a statement that the property is in good condition or otherwise or that any services or facilities are in good working order. All measurements are approximate