

# Parkheath

*Sold on Service*

---

**Lymington Road NW6**

**£4,600 PCM (£1,062 per week) - Camden Band E**



Spacious 3 bedroom apartment

1621 Sq Ft / 150.59 Sq M

36' reception/dining room with high ceilings and sky lights

3 generous double bedrooms

Additional guest room or office with open plan shower area

West Hampstead Office 020 7794 7111

Central West Hampstead

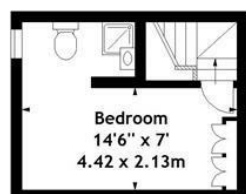
Ground floor and part lower ground of a period conversion

Access to a communal garden

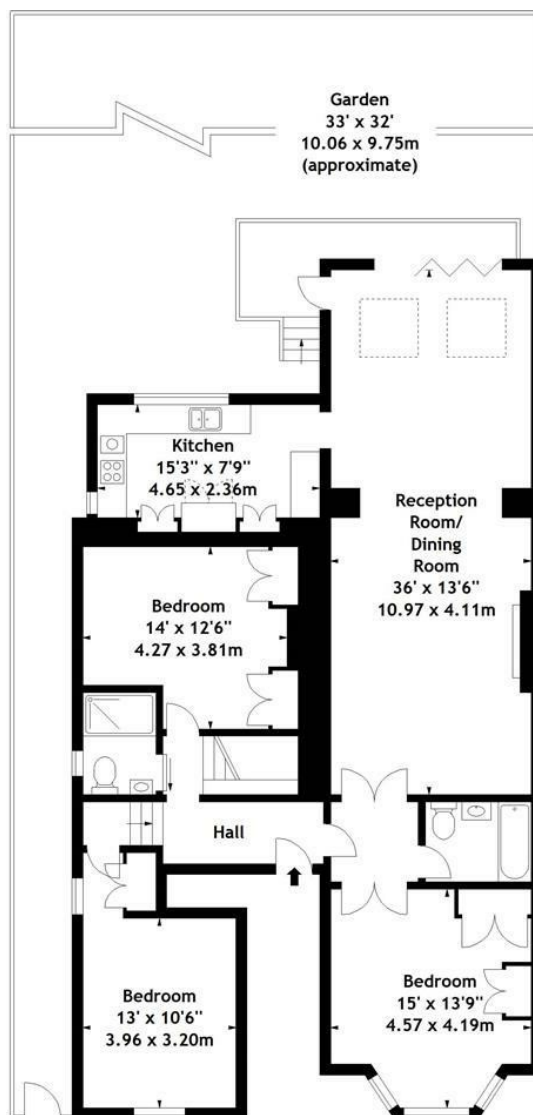
Bathroom and shower room

EPC: Rating C, Council Tax: Camden band E

Lymington Road, NW6  
 Approx. Gross Internal Area  
 1621 Sq Ft - 150.59 Sq M



Lower Ground Floor 170 sqft



Ground Floor 1451 sqft

Measured in accordance with RICS guidelines. Every attempt is made to ensure accuracy, however all measurements are approximate. This floor plan is for illustrative purposes only and is not to scale.  
 © Datagraphy Ltd 2014  
 Photographs \* Floorplans \* Virtual Tours  
 Tel: 0845 643 4401 www.datagraphy.com

The particulars do not constitute part of an offer or contract. The particulars, including text, photographs and plans, are for the guidance only of prospective purchasers/tenants and must not be relied upon as statements of fact. The descriptions provided therein represent the opinion of the author and whilst given in good faith should not be construed as statements of fact. Nothing in these particulars shall be deemed a statement that the property is in good condition or otherwise or that any services or facilities are in good working order. All measurements are approximate