

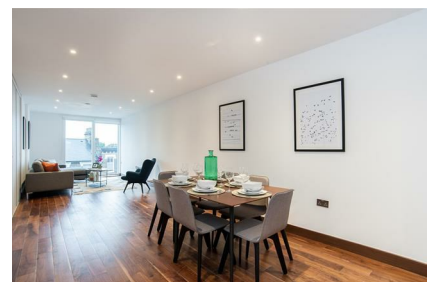
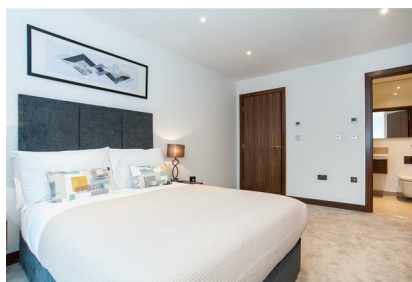
# Parkheath

*Sold on Service*

---

**Maygrove Road NW6**

**£4,246 PCM (£980 per week) - Camden Band F**



3 bedroom apartment in a stylish modern development  
Two private balconies

Located on the 3rd floor with lift access

Reception room with wooden flooring

Moments from excellent transport links and local amenities

Generous 1245 Sq Ft / 115.66 Sq M

Concierge, residents' gym and well maintained communal grounds

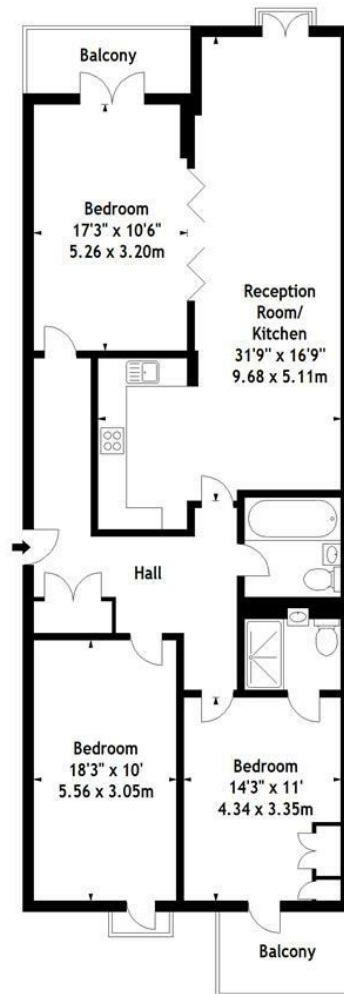
Open plan kitchen with integrated appliances

2 bathrooms (1 en suite shower room)

EPC: Rating B, Council Tax: Camden Band F

West Hampstead Office 020 7794 7111

Beaufort Court,  
Maygrove Road, NW6  
Approx. Gross Internal Area  
1245 Sq Ft - 115.66 Sq M



Third Floor

Measured in accordance with RICS guidelines. Every attempt is made to ensure accuracy, however all measurements are approximate. This floor plan is for illustrative purposes only and is not to scale.  
© Datagraphy Ltd 2016  
Photographs \* Floorplans \* Virtual Tours  
Tel: 0845 643 4401 www.datagraphy.com

The particulars do not constitute part of an offer or contract. The particulars, including text, photographs and plans, are for the guidance only of prospective purchasers/tenants and must not be relied upon as statements of fact. The descriptions provided therein represent the opinion of the author and whilst given in good faith should not be construed as statements of fact. Nothing in these particulars shall be deemed a statement that the property is in good condition or otherwise or that any services or facilities are in good working order. All measurements are approximate