

Parkheath

Sold on Service

Greencroft Gardens NW6

£3,350 PCM (£773 per week) - Camden Band E



Unique 2 bedroom, 2 bathroom apartment

1051 Sq Ft / 97.64 Sq M

Rear facing balcony with lovely open views

18' main bedroom with en suite five-piece bathroom

Approx. 9 minute walk to Finchley Road underground station

Direct lift access into the apartment

Top floor of handsome double-fronted period property

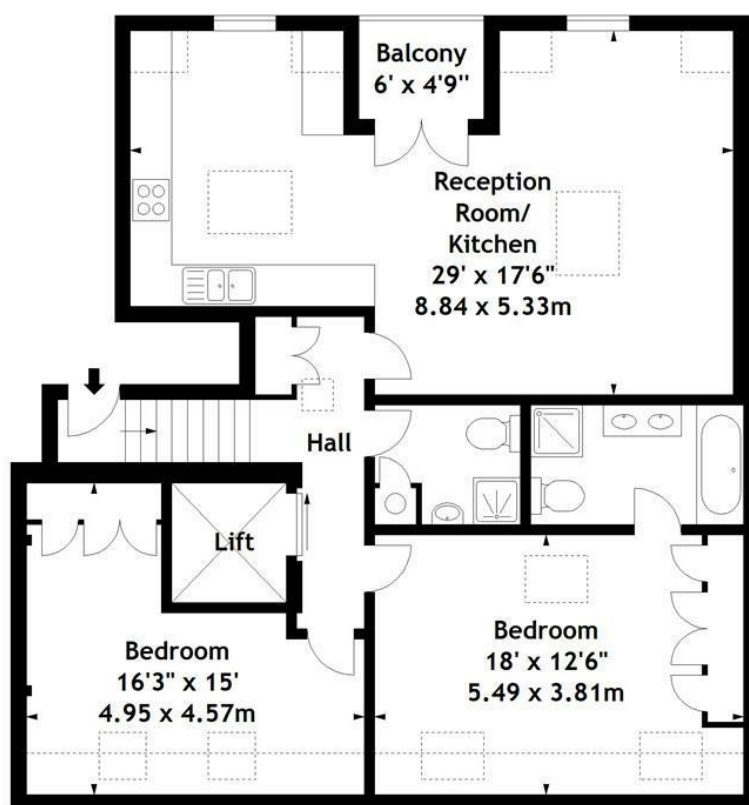
Stunning open plan reception/kitchen

Both double bedrooms with built in storage

EPC: Rating C, Council Tax: Camden Band E

West Hampstead Office 020 7794 7111

Greencroft Gardens, NW6
 Approx. Gross Internal Area
 1051 Sq Ft - 97.64 Sq M
 (excluding lift area)
 Approx. Gross Internal Area
 1100 Sq Ft - 102.19 Sq M
 (including lift area)



Third Floor

Measured in accordance with RICS guidelines. Every attempt is made to ensure accuracy, however all measurements are approximate. This floor plan is for illustrative purposes only and is not to scale.
 © Datagraphy Ltd 2016
 Photographs * Floorplans * Virtual Tours
 Tel: 0845 643 4401 www.datagraphy.com

The particulars do not constitute part of an offer or contract. The particulars, including text, photographs and plans, are for the guidance only of prospective purchasers/tenants and must not be relied upon as statements of fact. The descriptions provided therein represent the opinion of the author and whilst given in good faith should not be construed as statements of fact. Nothing in these particulars shall be deemed a statement that the property is in good condition or otherwise or that any services or facilities are in good working order. All measurements are approximate