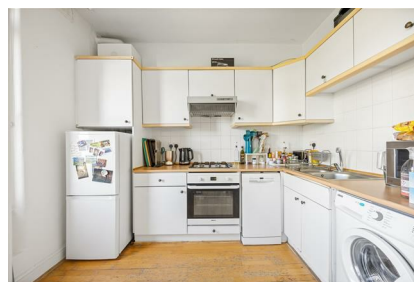


Parkheath

Sold on Service

Greencroft Gardens NW6

£2,300 PCM (£531 per week) - Camden Band E



Bright and airy second floor apartment

Balcony overlooking 3-acre residents' communal garden

Spacious reception/dining room

2 bedrooms (1 double and 1 box room/office)

4 minute walk to Finchley Road underground

South Hampstead conservation area

High ceilings and wood flooring throughout

Semi open plan kitchen

Convenient for shops and local amenities

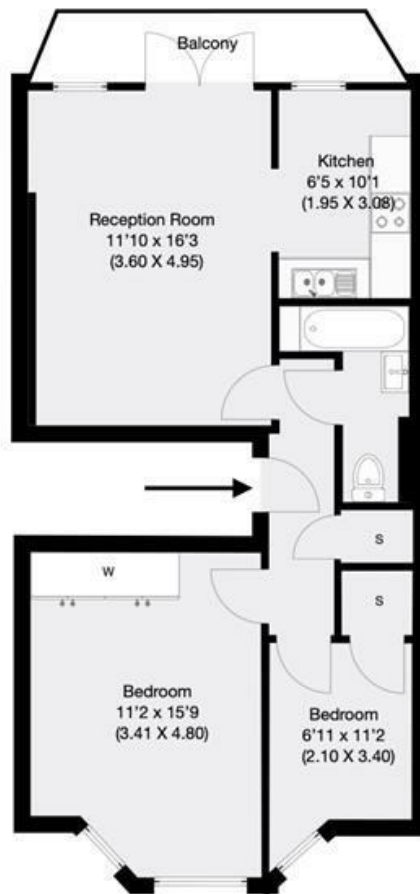
EPC: Rating C, Council Tax: Camden Band E

West Hampstead Office 020 7794 7111



Greencroft Gardens, London, NW6

Approximate Gross Internal Area 56.5 sqm / 608 sqft



Second Floor

THIS FLOOR PLAN IS PRODUCED FOR PARKHEATH SUBMITTED BY ARCHIMEDIA web: www.archi-media.co.uk

Whilst every attempt has been made to ensure the accuracy of the floor plan contained here, measurements of doors, windows and rooms are approximate and no responsibility is taken for any error, omission or misstatement. These plans are for representation purposes only and should be used as such by any prospective buyer or lease. Specifically no guarantee is given on the gross internal floor area of the property if quoted on this plan and any figures given is initial guidance only and should be treated as such.

The particulars do not constitute part of an offer or contract. The particulars, including text, photographs and plans, are for the guidance only of prospective purchasers/tenants and must not be relied upon as statements of fact. The descriptions provided therein represent the opinion of the author and whilst given in good faith should not be construed as statements of fact. Nothing in these particulars shall be deemed a statement that the property is in good condition or otherwise or that any services or facilities are in good working order. All measurements are approximate.