

Parkheath

Sold on Service

Priory Terrace NW6

£2,200 PCM (£508 per week) - Camden Band D



2 bedroom apartment

Reception room with dark wood flooring

Spacious main bedroom with built-in storage

Modern shower room

Council Tax: Camden Band D

Top (2nd) floor of a period conversion

Semi open plan fitted kitchen, including a dishwasher

Second bedroom/home office

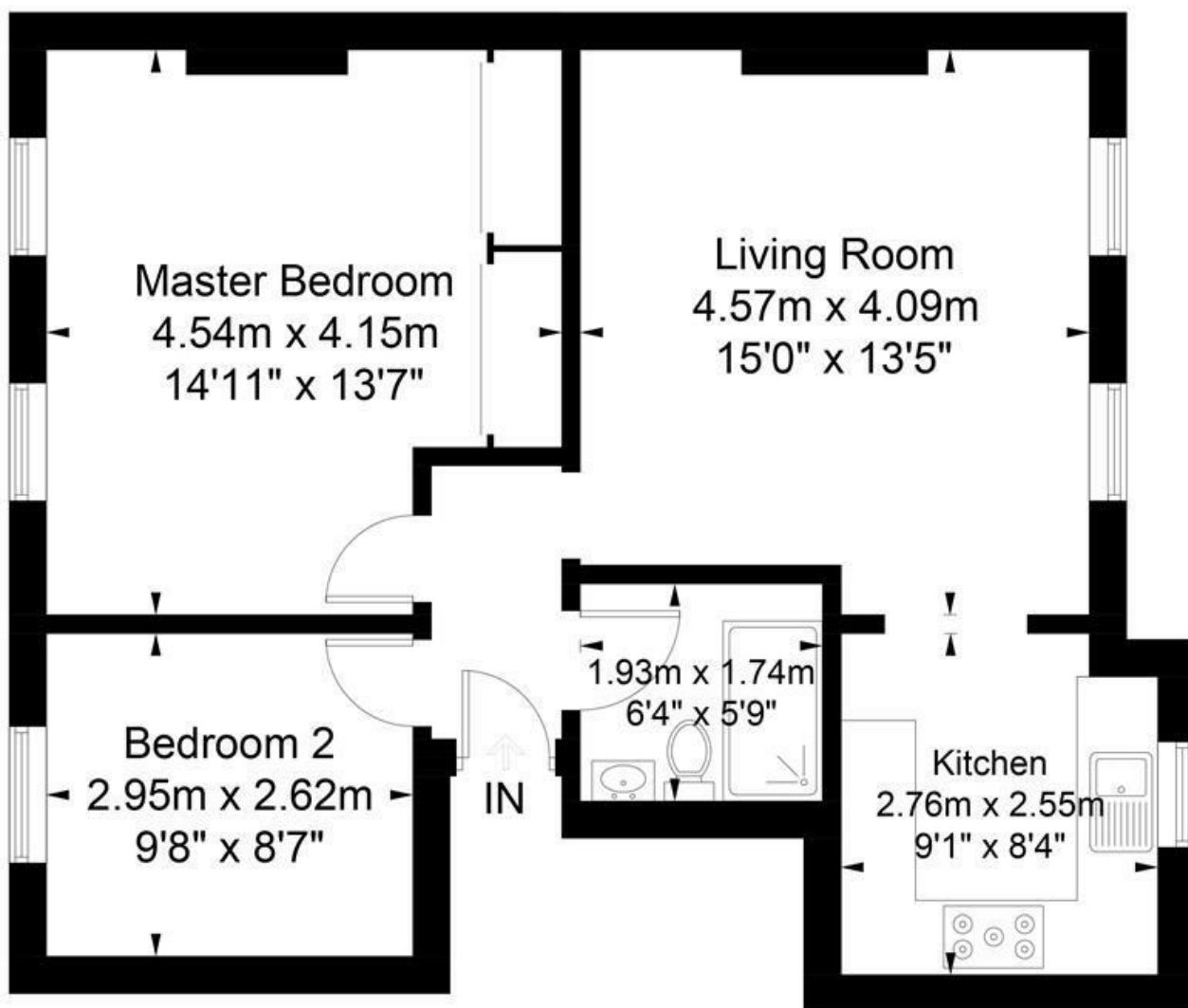
Close to South Hampstead overground and West Hampstead tube

EPC: Energy Rating D

West Hampstead Office 020 7794 7111

Priory Terrace

Approximate Gross Internal Area = 58.1 sq m / 625 sq ft



Second Floor

Illustration for identification purposes only, measurements are approximate,
not to scale. FloorplansUsketch.com © 2019 (ID537736)
ELLIE CLAIRE PHOTOGRAPHY LTD

The particulars do not constitute part of an offer or contract. The particulars, including text, photographs and plans, are for the guidance only of prospective purchasers/tenants and must not be relied upon as statements of fact. The descriptions provided therein represent the opinion of the author and whilst given in good faith should not be construed as statements of fact. Nothing in these particulars shall be deemed a statement that the property is in good condition or otherwise or that any services or facilities are in good working order. All measurements are approximate