

Parkheath

Sold on Service

Greencroft Gardens NW6
£2,850 PCM (£658 per week)



2 bedroom apartment in South Hampstead Conservation area

Two double bedrooms, each with its own en suite shower room

Spacious reception room with semi open plan kitchen

Double glazed windows

Pet-friendly Landlord

South Hampstead Office 020 7625 4567

West Hampstead Office 020 7794 7111

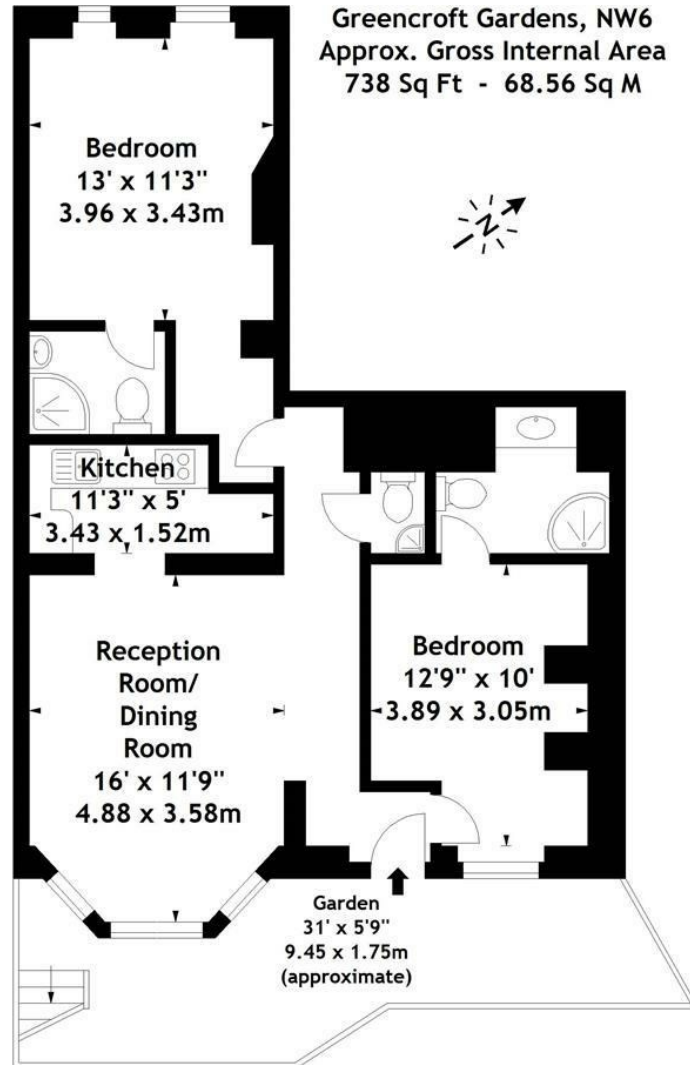
Wood flooring throughout

Lower ground level with private entrance

Private front courtyard, and access to a beautiful communal garden

Approx 4-minute walk to Finchley Road underground

EPC: Rating C, Council Tax: Camden Band D



Lower Ground Floor

Measured in accordance with RICS guidelines. Every attempt is made to ensure accuracy, however all measurements are approximate. This floor plan is for illustrative purposes only and is not to scale.

© Datagraphy Ltd 2014

Photographs * Floorplans * Virtual Tours
 Tel: 0845 643 4401 www.datagraphy.com

The particulars do not constitute part of an offer or contract. The particulars, including text, photographs and plans, are for the guidance only of prospective purchasers/tenants and must not be relied upon as statements of fact. The descriptions provided therein represent the opinion of the author and whilst given in good faith should not be construed as statements of fact. Nothing in these particulars shall be deemed a statement that the property is in good condition or otherwise or that any services or facilities are in good working order. All measurements are approximate