

Parkheath

Sold on Service

Priory Terrace NW6

£2,300 PCM (£531 per week) - Camden Band D

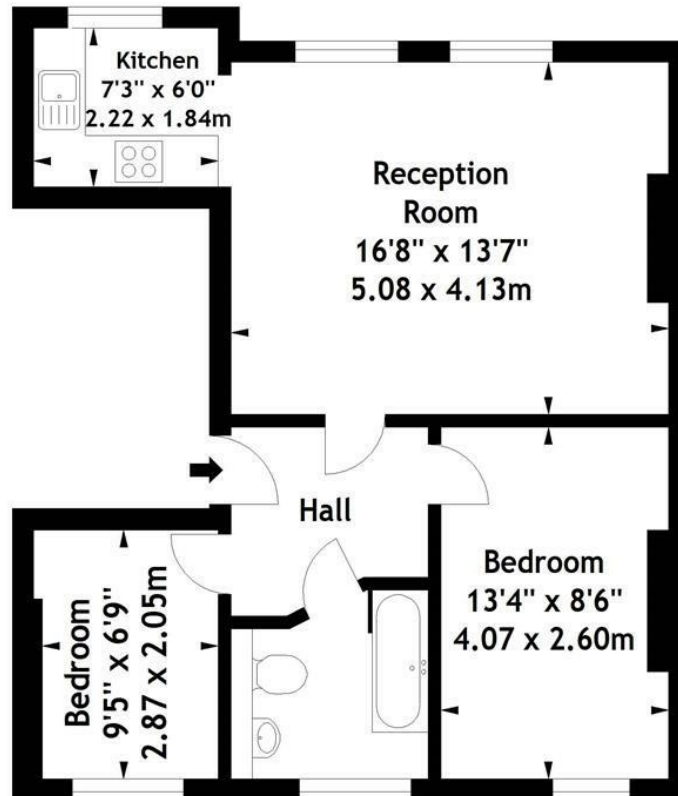


Attractive 2 bedroom apartment in South Hampstead
First floor conversion in stucco fronted period house
Semi open plan fitted kitchen, including a dishwasher
Excellent local transport links and amenities nearby

Situated on a quiet residential street
Bright 16' x 13' reception room with wood flooring
Spacious main bedroom plus a second small double bedroom
EPC: Rating D, Council Tax: Camden Band D

West Hampstead Office 020 7794 7111

Priory Terrace, NW6
Approx. Gross Internal Area
573 Sq Ft - 53.23 Sq M



First Floor

Measured in accordance with RICS guidelines. Every attempt is made to ensure accuracy, however all measurements are approximate. This floor plan is for illustrative purposes only and is not to scale.

© Datagraphy Ltd 2014
Photographs * Floorplans * Virtual Tours
Tel: 0845 643 4401 www.datagraphy.com

The particulars do not constitute part of an offer or contract. The particulars, including text, photographs and plans, are for the guidance only of prospective purchasers/tenants and must not be relied upon as statements of fact. The descriptions provided therein represent the opinion of the author and whilst given in good faith should not be construed as statements of fact. Nothing in these particulars shall be deemed a statement that the property is in good condition or otherwise or that any services or facilities are in good working order. All measurements are approximate