

Parkheath

Sold on Service

Fairfax Road NW6

£3,200 PCM (£738 per week) - Camden Band E



3 double bedroom apartment

2- minute walk to South Hampstead overground station

First floor of a purpose-built block above commercial premises

Separate fitted kitchen

Close to local shops, cafés, and amenities

West Hampstead Office 020 7794 7111

Ideal for 3 sharers

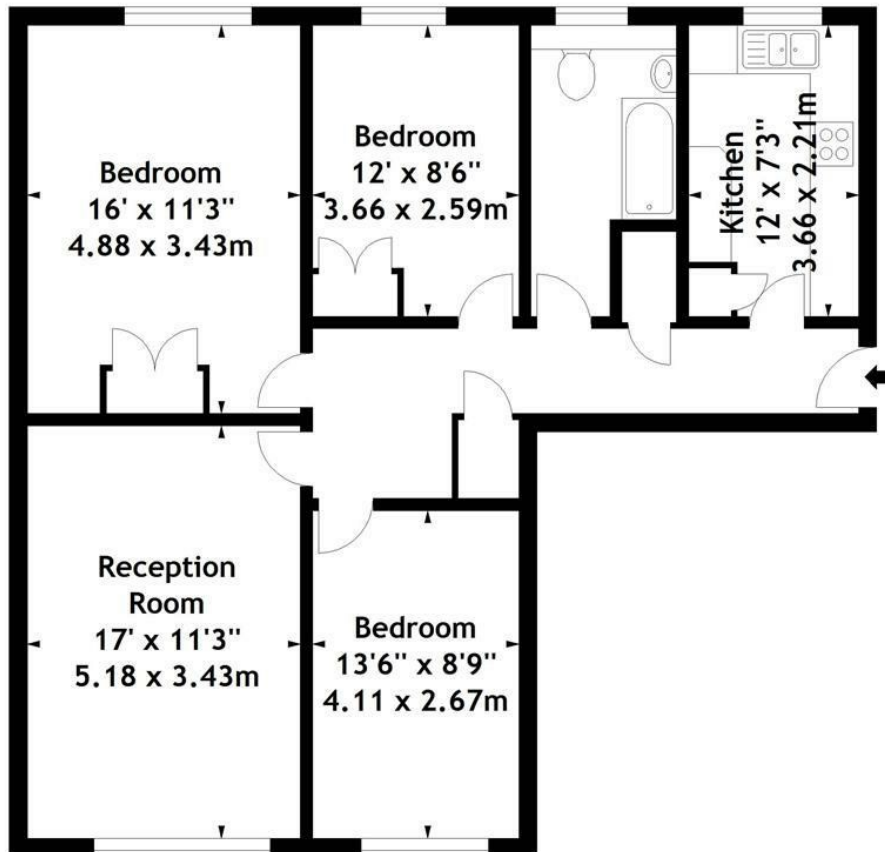
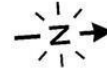
5-minute walk to Swiss Cottage underground station (Jubilee Line)

Spacious reception room with wood flooring

Neutral decor

EPC: Rating C, Council Tax: Camden Band E

Fairfax Court, NW6
Approx. Gross Internal Area
902 Sq Ft - 83.80 Sq M



First Floor

Measured in accordance with RICS guidelines. Every attempt is made to ensure accuracy, however all measurements are approximate. This floor plan is for illustrative purposes only and is not to scale.

© Datagraphy Ltd 2014
Photographs * Floorplans * Virtual Tours
Tel: 0845 643 4401 www.datagraphy.com

The particulars do not constitute part of an offer or contract. The particulars, including text, photographs and plans, are for the guidance only of prospective purchasers/tenants and must not be relied upon as statements of fact. The descriptions provided therein represent the opinion of the author and whilst given in good faith should not be construed as statements of fact. Nothing in these particulars shall be deemed a statement that the property is in good condition or otherwise or that any services or facilities are in good working order. All measurements are approximate