

Parkheath

Sold on Service

Rockhall Road NW2

£1,950 PCM (£450 per week) - Brent Band C



Ground floor period conversion

Large main bedroom and bright single 2nd bedroom/dining room/office

Separate fitted kitchen

South facing bedrooms

0.5 miles to Willesden Green underground

Private south facing paved garden

Reception room with wood flooring and bay window

Bathroom with WC

0.4 miles to Cricklewood Thameslink

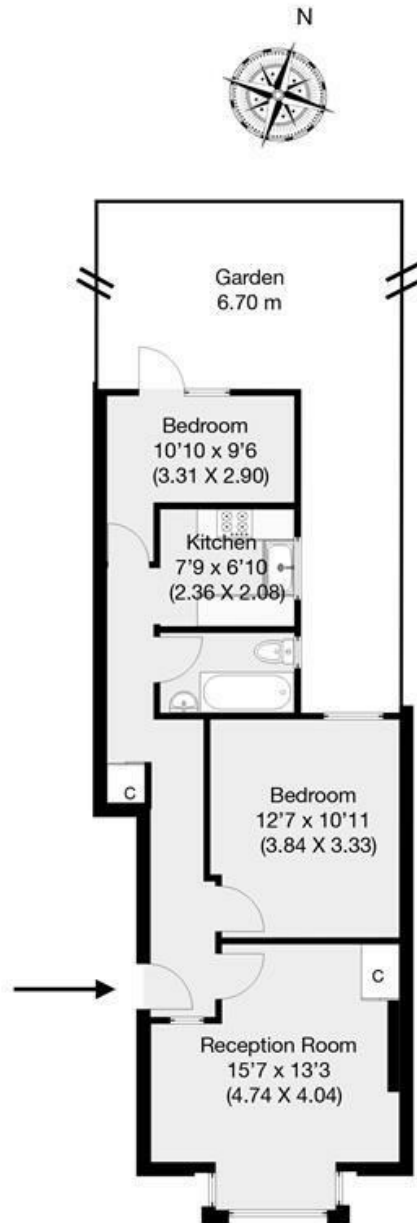
EPC: Rating C, Council Tax: Brent Band C

West Hampstead Office 020 7794 7111



Rockhall Road, London, NW2

Approximate Gross Internal Area 54.2 sqm / 583 sqft



Ground Floor

THIS FLOOR PLAN IS PRODUCED FOR PARKHEATH SUBMITTED BY ARCHIMEDIA web: www.archi-media.co.uk

Whilst every attempt has been made to ensure the accuracy of the floor plan contained here, measurements of doors, windows and rooms are approximate and no responsibility is taken for any error, omission or misstatement. These plans are for representation purposes only and should be used as such by any prospective buyer or lease. Specifically no guarantee is given on the gross internal floor area of the property if quoted on this plan and any figures given is initial guidance only and should be treated as such.

The particulars do not constitute part of an offer or contract. The particulars, including text, photographs and plans, are for the guidance only of prospective purchasers/tenants and must not be relied upon as statements of fact. The descriptions provided therein represent the opinion of the author and whilst given in good faith should not be construed as statements of fact. Nothing in these particulars shall be deemed a statement that the property is in good condition or otherwise or that any services or facilities are in good working order. All measurements are approximate.