

Parkheath

Sold on Service

Acol Road NW6

£2,150 PCM (£380 per week) - Camden Band D



Extremely spacious 1st floor apartment

670 Sq Ft / 62.24 Sq M

The apartment will be redecorated throughout once the current tenant has vacated

Large open plan kitchen (includes dishwasher)

0.4 miles to West Hampstead underground station (Jubilee line, zone 2)

West Hampstead Office 020 7794 7111

Smart art deco building with lift access

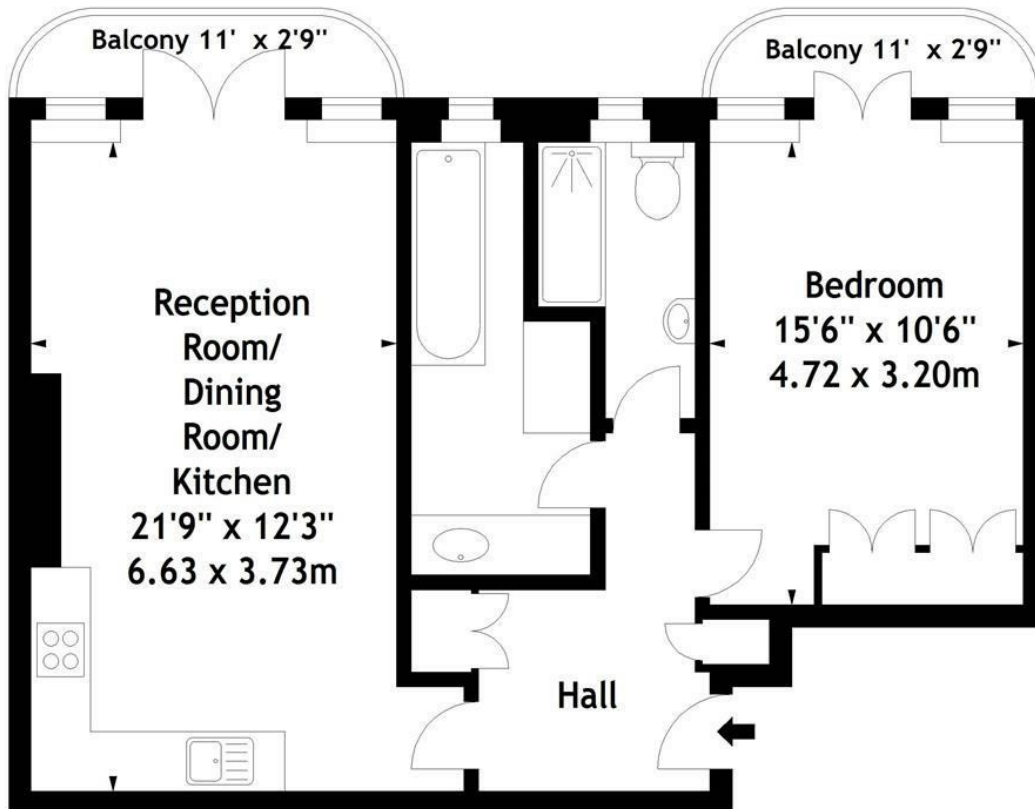
Communal heating (rent includes heating & hot water)

Reception room with wood floor and door to balcony

Bathroom and additional shower room with WC

EPC: Rating C, Council Tax: Camden band D

Acol Court, NW6
Approx. Gross Internal Area
670 Sq Ft - 62.24 Sq M



First Floor

Measured in accordance with RICS guidelines. Every attempt is made to ensure accuracy, however all measurements are approximate. This floor plan is for illustrative purposes only and is not to scale.

© Datography Ltd 2014

Photographs * Floorplans * Virtual Tours
Tel: 0845 643 4401 www.datography.com

The particulars do not constitute part of an offer or contract. The particulars, including text, photographs and plans, are for the guidance only of prospective purchasers/tenants and must not be relied upon as statements of fact. The descriptions provided therein represent the opinion of the author and whilst given in good faith should not be construed as statements of fact. Nothing in these particulars shall be deemed a statement that the property is in good condition or otherwise or that any services or facilities are in good working order. All measurements are approximate