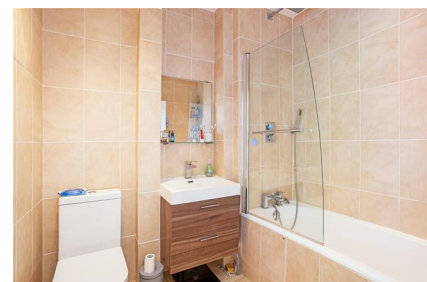


Parkheath

Sold on Service

Loveridge Road NW6

£1,850 PCM (£427 per week) - Camden Band C



Attractive 1 bedroom flat

2nd floor (top floor) of a period conversion

Reception with open plan kitchen

Tiled bathroom

Close to West Hampstead and Kilburn transport facilities

West Hampstead Office 020 7794 7111

Bright rooms throughout

Entrance at 1st floor level

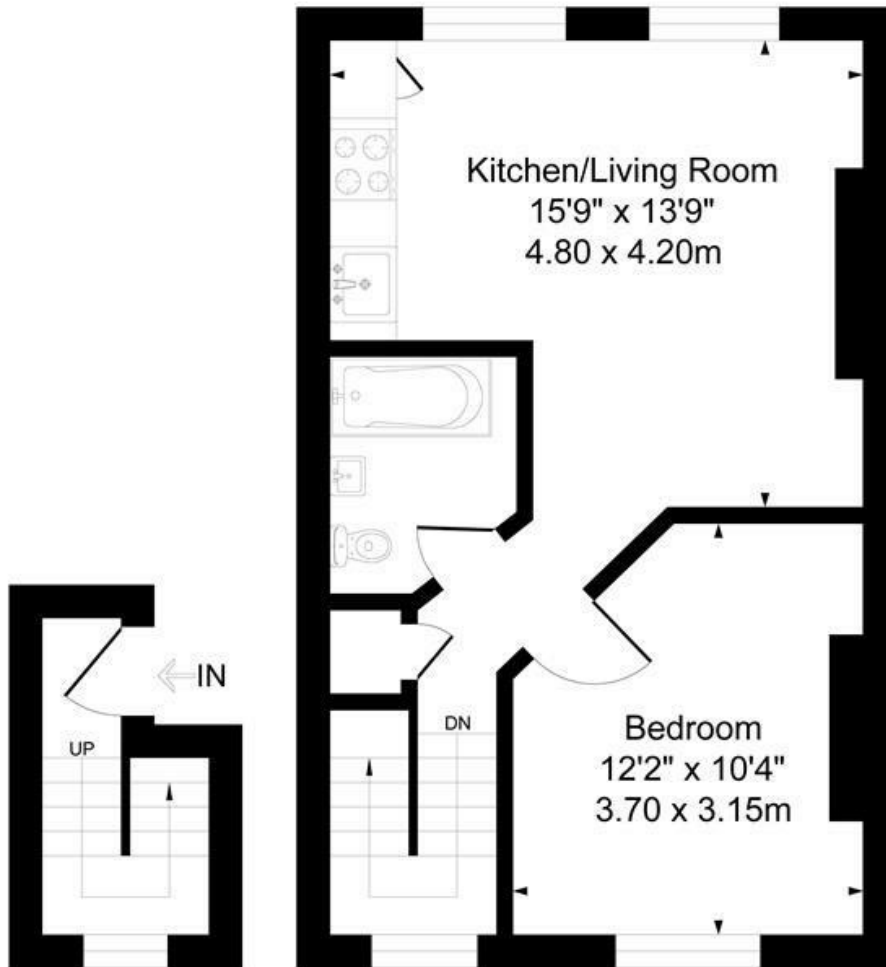
Wood floors

Conveniently located for all West Hampstead & Kilburn amenities

EPC: Rating C, Council Tax: Camden band C

Loveridge Road

Approximate Gross Internal Area = 42 sq m / 451 sq ft



First Floor

Second Floor

Measured in accordance with RICS guidelines. Every attempt is made to ensure accuracy
However all measurements are approximate.
The Floor plan is illustrative purposes Only and is not to scale
ELLIE CLAIRE PHOTOGRAPHY LTD

The particulars do not constitute part of an offer or contract. The particulars, including text, photographs and plans, are for the guidance only of prospective purchasers/tenants and must not be relied upon as statements of fact. The descriptions provided therein represent the opinion of the author and whilst given in good faith should not be construed as statements of fact. Nothing in these particulars shall be deemed a statement that the property is in good condition or otherwise or that any services or facilities are in good working order. All measurements are approximate