

# Parkheath

*Sold on Service*

**Fawley Road NW6**

**£4,250 PCM (£981 per week) - Camden Band F**



**SHORT LET - AVAILABLE FOR 3-6 MONTHS**

Large private patio garden

Main bedroom with en suite bathroom

Wood flooring

Central West Hampstead location

West Hampstead Office 020 7794 7111

Stylish 3 bedroom apartment

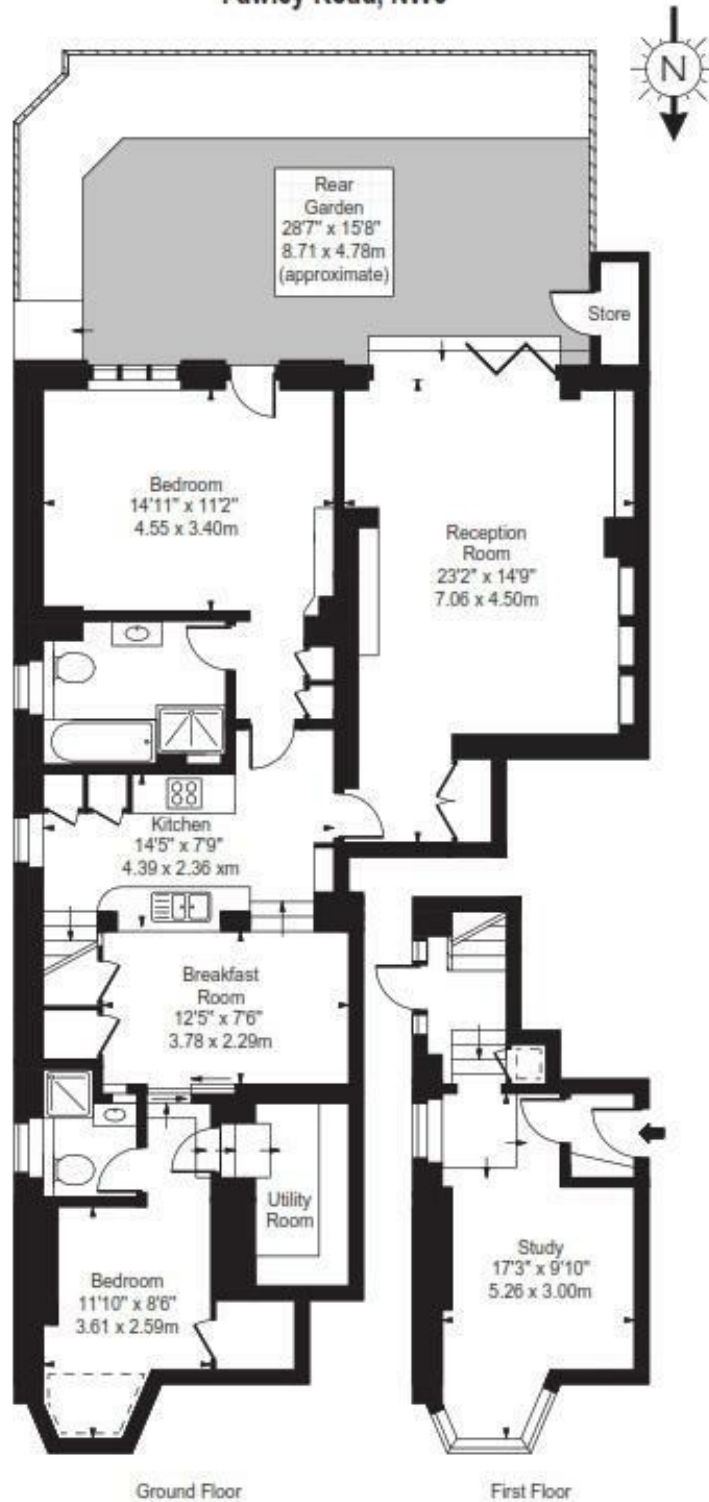
Split level conversion

Kitchen/diner

Spacious reception room with bi-folding doors to garden

EPC: Rating: D, Council Tax: Camden band F

Fawley Road, NW6



Approx Gross Internal Area 1280 Sq Ft - 118.91 Sq M  
(Excluding Store)

For illustration purposes only - Not To Scale  
Floor plan by [www.nogaphotostudio.com](http://www.nogaphotostudio.com)  
Ref. No. 526

The particulars do not constitute part of an offer or contract. The particulars, including text, photographs and plans, are for the guidance only of prospective purchasers/tenants and must not be relied upon as statements of fact. The descriptions provided therein represent the opinion of the author and whilst given in good faith should not be construed as statements of fact. Nothing in these particulars shall be deemed a statement that the property is in good condition or otherwise or that any services or facilities are in good working order. All measurements are approximate