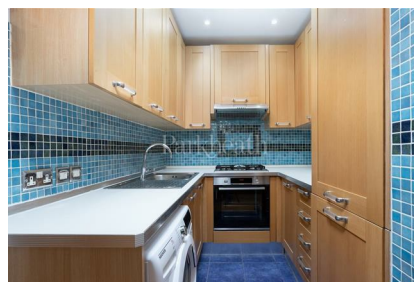
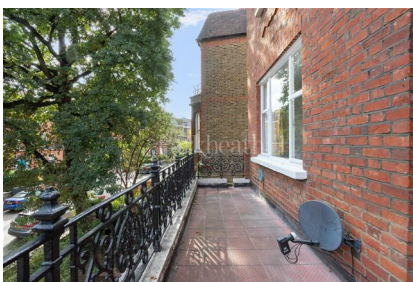


# Parkheath

*Sold on Service*

## Canfield Gardens NW6

**£2,350 PCM (£542 per week) - Camden Band E**



Well-presented 2 bedroom flat

1st floor within a double fronted period conversion

Spacious reception room

1 double bedroom & 1 single bedroom/office

Approx 5 minute walk to Finchley Road underground station

Private south facing terrace

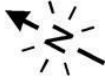
Wood floors

Semi open plan kitchen

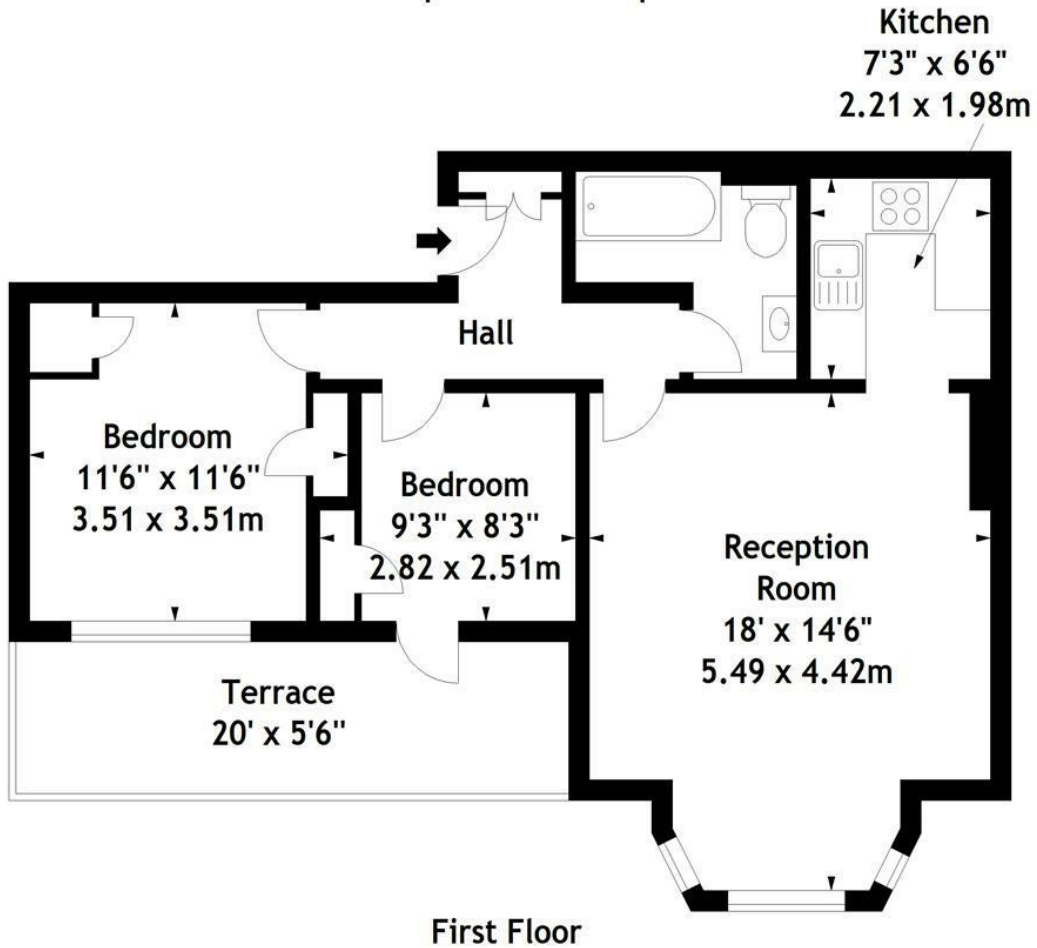
Access to communal garden

EPC: Rating C, Council Tax: Camden band E

West Hampstead Office 020 7794 7111



Canfield Gardens, NW6  
Approx. Gross Internal Area  
602 Sq Ft - 55.93 Sq M



Measured in accordance with RICS guidelines. Every attempt is made to ensure accuracy, however all measurements are approximate. This floor plan is for illustrative purposes only and is not to scale.

© Datography Ltd 2015

Photographs \* Floorplans \* Virtual Tours  
Tel: 0845 643 4401 [www.datography.com](http://www.datography.com)

The particulars do not constitute part of an offer or contract. The particulars, including text, photographs and plans, are for the guidance only of prospective purchasers/tenants and must not be relied upon as statements of fact. The descriptions provided therein represent the opinion of the author and whilst given in good faith should not be construed as statements of fact. Nothing in these particulars shall be deemed a statement that the property is in good condition or otherwise or that any services or facilities are in good working order. All measurements are approximate