

# Parkheath

*Sold on Service*

**Christchurch Avenue NW6**

**£2,700 PCM (£623 per week) - Brent - Basement Flat Band C**



Lovely 2 bedroom apartment

Extensive communal garden

2 bathrooms (1 en suite)

Large open plan kitchen/reception room

Approx 3 minute walk to Kilburn underground  
(Jubilee line, zone 2)

Private garden area

Ground floor with private entrance

1032 Sq Ft / 95.9 Sq M

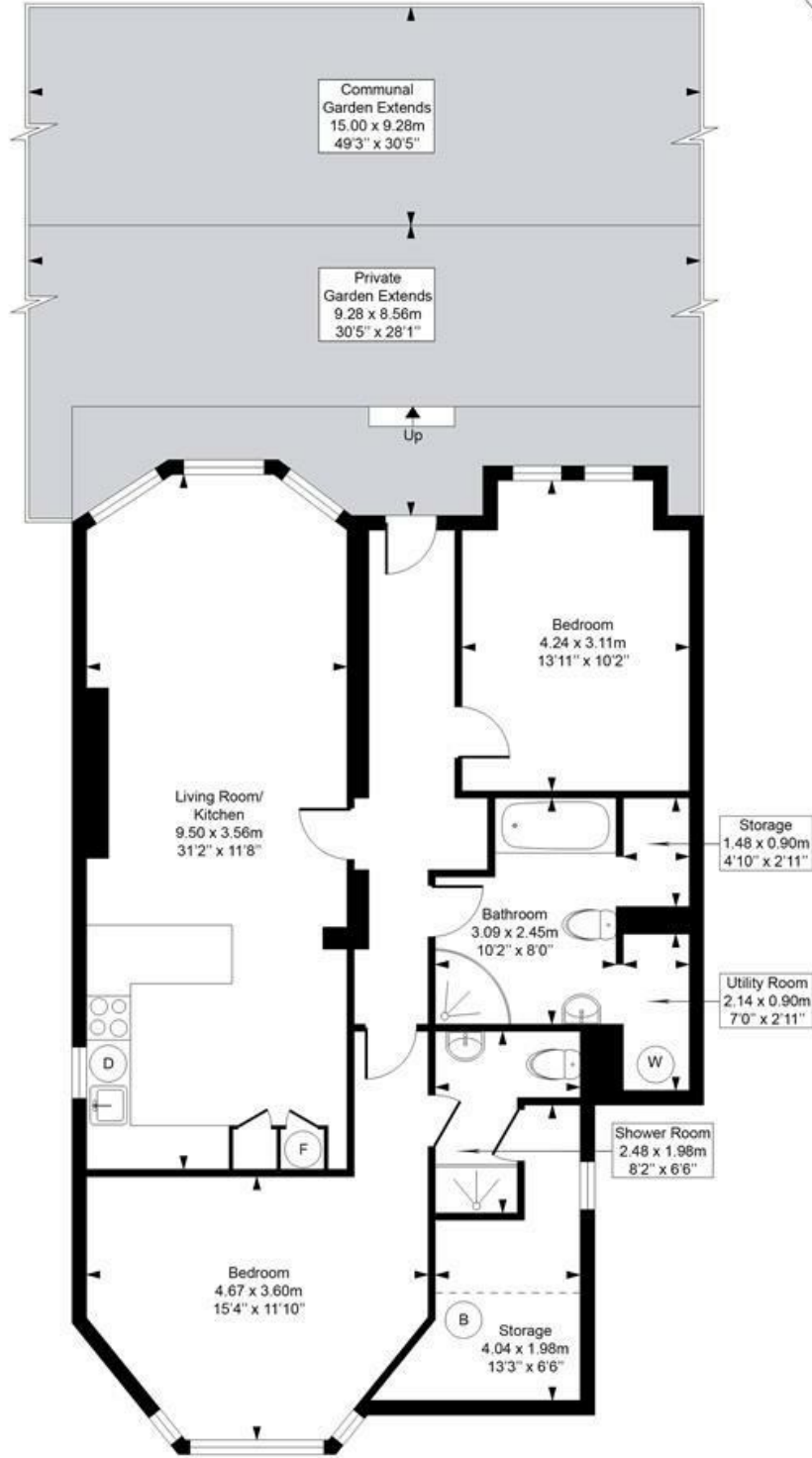
Wood floors throughout

EPC: Rating C, Council Tax: Brent band C

West Hampstead Office 020 7794 7111

# Christchurch Avenue

Approximate Gross Internal Area = 95.9 Sq m / 1032 sq ft



## Lower Ground Floor

This plan is for layout guidance only. Drawn in accordance with RICS guidelines. Not drawn to scale unless stated. Windows & door openings are approximate. Whilst every care is taken in the preparation of this plan, please check all dimensions, shapes & compass bearings before marking any decisions reliant upon them.

ELLIE CLAIRE PHOTOGRAPHY LTD  
[www.ellieclairephotography.com](http://www.ellieclairephotography.com)

The particulars do not constitute part of an offer or contract. The particulars, including text, photographs and plans, are for the guidance only of prospective purchasers/tenants and must not be relied upon as statements of fact. The descriptions provided therein represent the opinion of the author and whilst given in good faith should not be construed as statements of fact. Nothing in these particulars shall be deemed a statement that the property is in good condition or otherwise or that any services or facilities are in good working order. All measurements are approximate