

# Parkheath

*Sold on Service*

**Broomsleigh Street NW6**

**£1,670 PCM (£385 per week) - Camden Band C**



Ground floor 1 bedroom apartment

Wood floors

Bedroom with fitted storage

Conveniently located just off Mill Lane

EPC rating D

West Hampstead Office 020 7794 7111

Private entrance

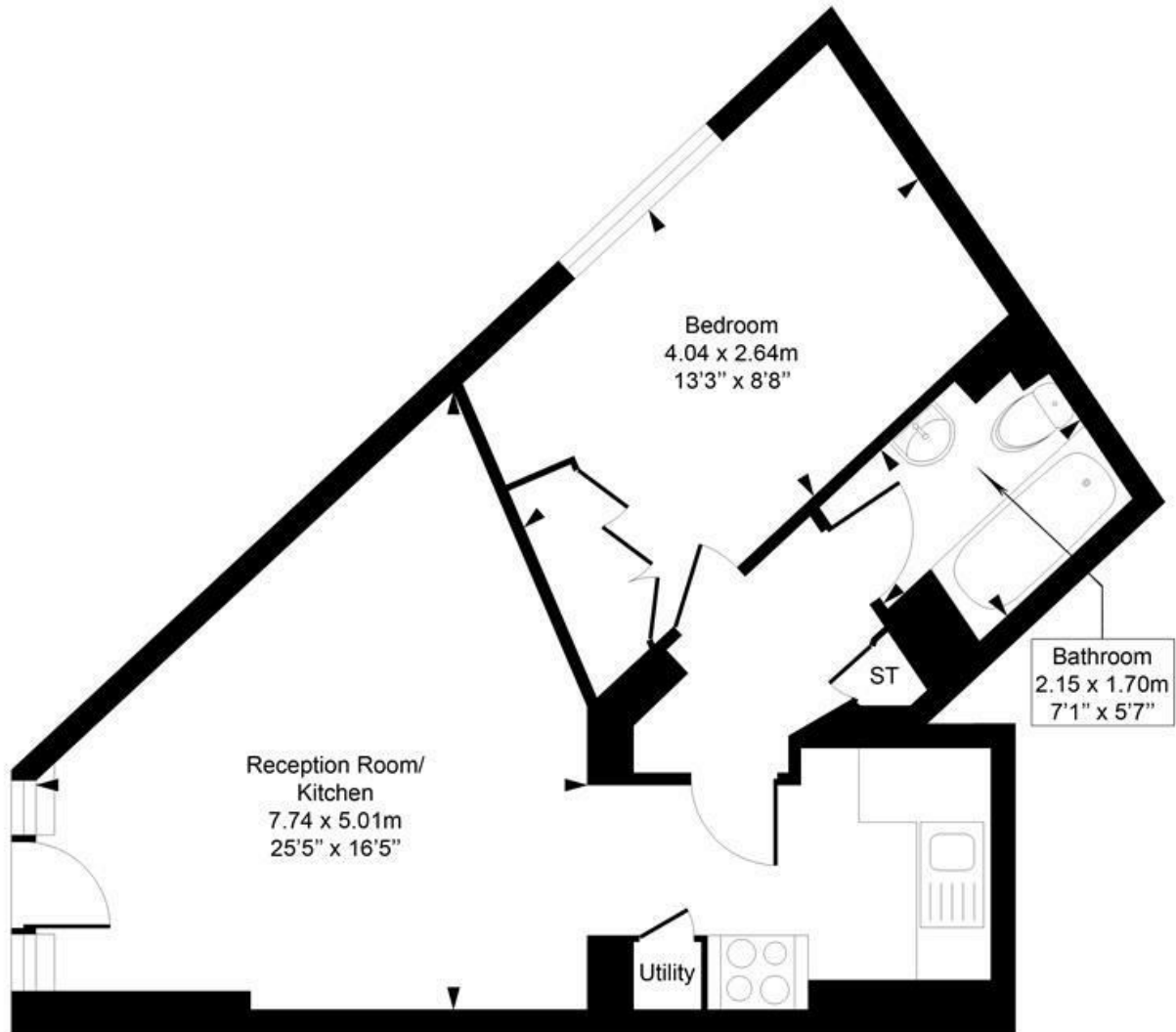
Reception room with recessed open plan kitchen

Bathroom/WC

Close to all West Hampstead transport and amenities

Council tax: Camden band C

**Broomsleigh Street**  
Approximate Gross Internal Area = 41.2 Sq m / 444 sq ft



**Ground Floor**

Measured in accordance with RICS guidelines. Every attempt is made to ensure accuracy  
However all measurements are approximate.  
The floor plan is illustrative purposes only and is not to scale  
ELLIE CLAIRE PHOTOGRAPHY LTD  
[www.ellieclairephotography.com](http://www.ellieclairephotography.com)

The particulars do not constitute part of an offer or contract. The particulars, including text, photographs and plans, are for the guidance only of prospective purchasers/tenants and must not be relied upon as statements of fact. The descriptions provided therein represent the opinion of the author and whilst given in good faith should not be construed as statements of fact. Nothing in these particulars shall be deemed a statement that the property is in good condition or otherwise or that any services or facilities are in good working order. All measurements are approximate