



Dynham Road NW6

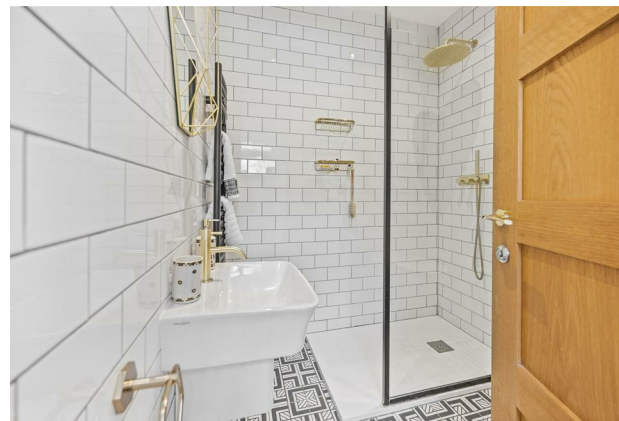
Parkheath  
*Sold on Service*





**Dynham Road, NW6**  
**£615,000**  
**Leasehold**

- Exemplary first floor 2 bedroom apartment
- Tastefully refurbished throughout
- Bright semi-open plan kitchen living room with bay window
- Rear facing master bedroom with fitted storage
- Flexible 2nd bedroom/study with garden views
- 571 sq ft / 52 sq m
- Fully fitted kitchen
- 7 minute walk to West Hampstead transport links
- Chain free sale



**Parkheath**  
*Sold on Service*

**Camden Tax band D**

Belsize Park/Hampstead  
 208 Haverstock Hill  
 NW3 2AG  
 Sales 020 7431 1234  
 Lettings 020 7431 3104  
[nw3@parkheath.com](mailto:nw3@parkheath.com)

South/West Hampstead  
 192 West End Lane  
 NW6 1SG  
 Sales & Lettings  
 Tel 020 7794 7111  
[192@parkheath.com](mailto:192@parkheath.com)

Kensal Rise  
 54-56 Chamberlayne Rd  
 NW10 3JH  
 Tel 020 8960 4845  
[kensal@parkheath.com](mailto:kensal@parkheath.com)

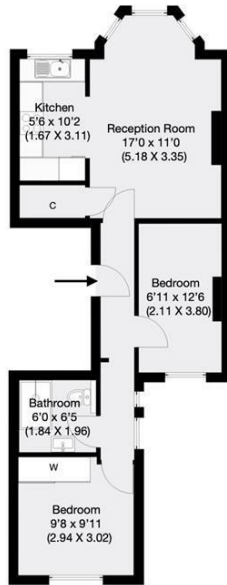
Property Management  
 192 West End Lane  
 NW6 1SG  
 020 7433 6174  
[pm@parkheath.com](mailto:pm@parkheath.com)

[www.parkheath.com](http://www.parkheath.com)



Dynham Road, London, NW6

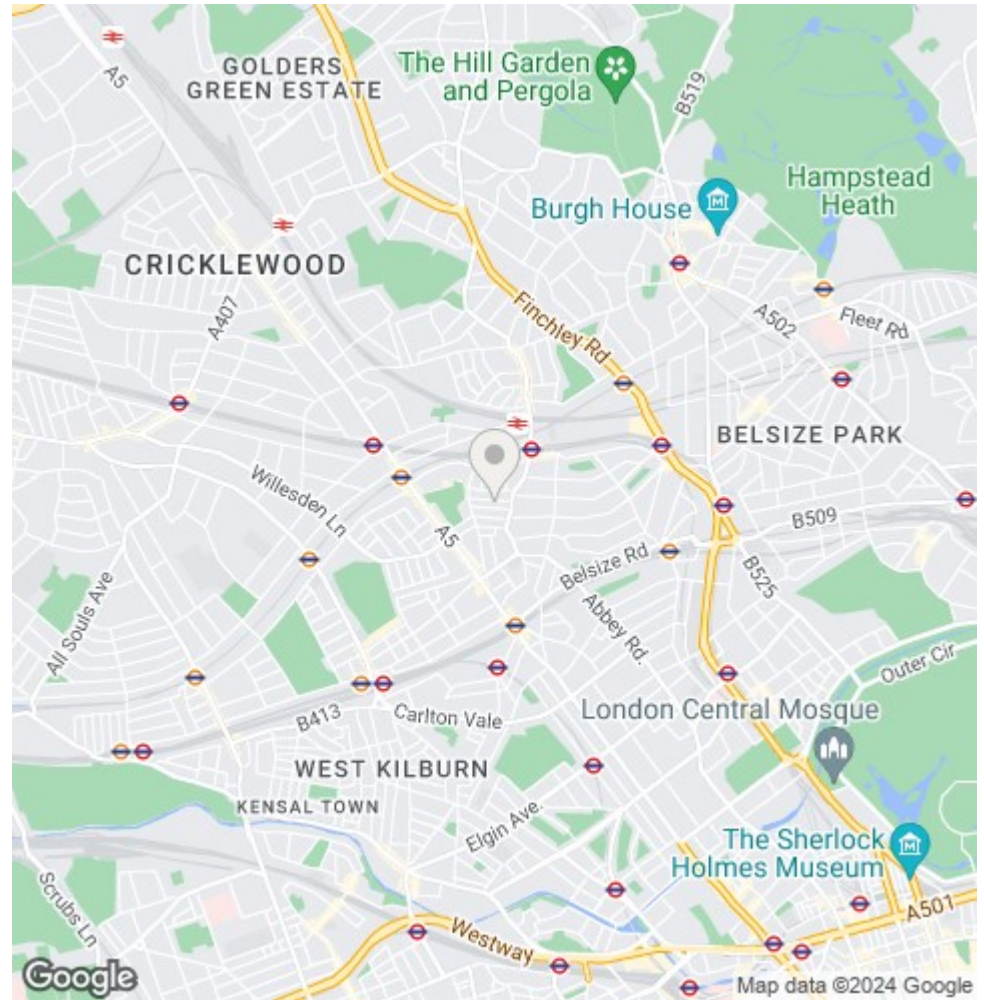
Approximate Gross Internal Area 53 sqm / 571 sqft



First Floor

THIS FLOOR PLAN IS PRODUCED FOR PARKHEATH SUBMITTED BY ARCHIMEDIA web: www.archi-media.co.uk

Whilst every attempt has been made to ensure the accuracy of the floor plan contained herein, measurements of doors, windows and rooms are approximate and no responsibility is taken for any error, omission or misstatement. These plans are for representation purposes only and should be used as such by any prospective buyer or lease. Specifically no guarantee is given on the gross internal floor area of the property if quoted on this plan and any figures given in initial guidance only and should be treated as such.



The particulars do not constitute part of an offer or contract. The particulars, including text, photographs and plans, are for the guidance only of prospective purchasers/tenants and must not be relied upon as statements of fact. The descriptions provided therein represent the opinion of the author and whilst given in good faith should not be construed as statements of fact. Nothing in these particulars shall be deemed a statement that the property is in good condition or otherwise or that any services or facilities are in good working order. All measurements are approximate