

Parkheath

Sold on Service

Fairhazel Gardens NW6

£2,950 PCM (£681 per week) - Camden Band E



Mid-terrace house

0.3 miles to Finchley Road underground station

Wooden floors

Reception room with access to the garden

Not suitable for 3 sharers

South Hampstead conservation area

Patio garden

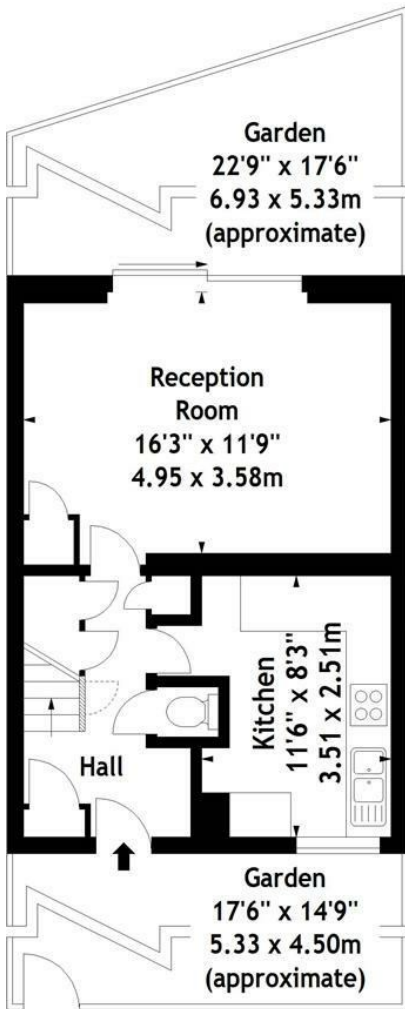
3 bedrooms (3rd room is a loft room)

Separate fitted kitchen

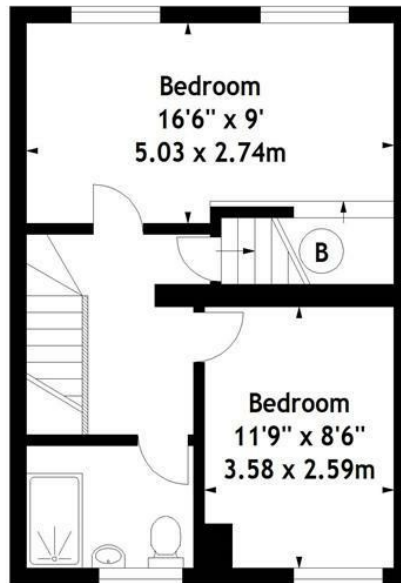
EPC: Rating D, Council Tax: Camden band E

West Hampstead Office 020 7794 7111

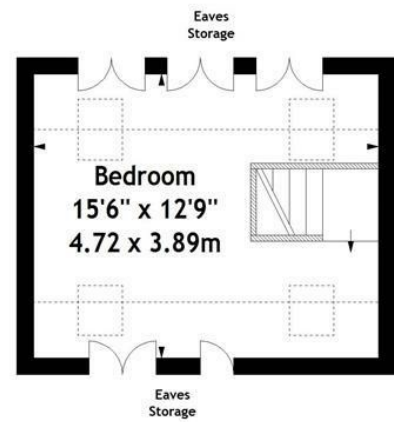
Fairhazel Gardens, NW6
 Approx. Gross Internal Area
 1003 Sq Ft - 93.18 Sq M



Ground Floor 401 sq ft



First Floor 404 sq ft



Second Floor 198 sq ft

Measured in accordance with RICS guidelines. Every attempt is made to ensure accuracy, however all measurements are approximate. This floor plan is for illustrative purposes only and is not to scale.
 © Datography Ltd 2014
 Photographs * Floorplans * Virtual Tours
 Tel: 0845 643 4401 www.datography.com

The particulars do not constitute part of an offer or contract. The particulars, including text, photographs and plans, are for the guidance only of prospective purchasers/tenants and must not be relied upon as statements of fact. The descriptions provided therein represent the opinion of the author and whilst given in good faith should not be construed as statements of fact. Nothing in these particulars shall be deemed a statement that the property is in good condition or otherwise or that any services or facilities are in good working order. All measurements are approximate