

Parkheath

Sold on Service

Liverpool Road N1
£6,500 PCM (£1500 per week) - Islington Band E



Wonderfully spacious 3-bedroom apartment

Terrace with steps down to private section of rear garden

1351 Sq Ft / 125.5 Sq M

Kitchen/diner

Highbury & Islington Station as well as Angel Station are close by

Occupying the upper floors of an attractive period conversion

Arranged over first, second and third floors

Bright reception room with floor to ceiling style windows

Bathroom and en-suite shower room

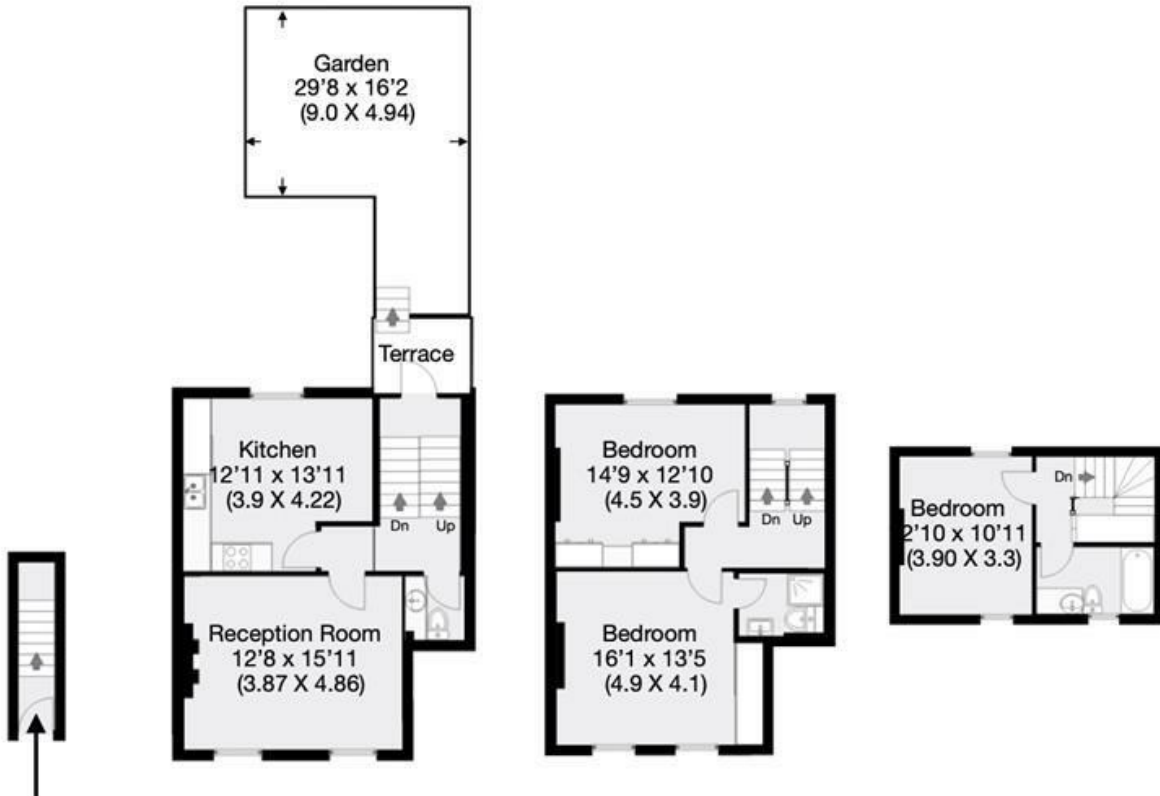
EPC: Rating D, Council Tax: Islington band E

West Hampstead Office 020 7794 7111



Liverpool Road, London, N1

Approximate Gross Internal Area 125.5 sqm / 1351 sqft



Ground Floor

First Floor

Second Floor

Third Floor

THIS FLOOR PLAN IS PRODUCED FOR PARKHEATH SUBMITTED BY ARCHIMEDIA web: www.archi-media.co.uk

Whilst every attempt has been made to ensure the accuracy of the floor plan contained here, measurements of doors, windows and rooms are approximate and no responsibility is taken for any error, omission or misstatement. These plans are for representation purposes only and should be used as such by any prospective buyer or lease. Specifically no guarantee is given on the gross internal floor area of the property if quoted on this plan and any figures given is initial guidance only and should be treated as such.

The particulars do not constitute part of an offer or contract. The particulars, including text, photographs and plans, are for the guidance only of prospective purchasers/tenants and must not be relied upon as statements of fact. The descriptions provided therein represent the opinion of the author and whilst given in good faith should not be construed as statements of fact. Nothing in these particulars shall be deemed a statement that the property is in good condition or otherwise or that any services or facilities are in good working order. All measurements are approximate