

# Parkheath

*Sold on Service*

**Agamemnon Road NW6**

**£4,500 PCM (£1038 per week) - Camden Band F**



Spacious 4 bedroom town house

Arranged over 4 floors

Fully equipped semi open plan kitchen

Downstairs utility area with WC

1729 Sq Ft / 160.70 Sq M

West Hampstead Office 020 7794 7111

Highly sought after location within the Greek Roads

Kitchen/dining area leading to rear garden

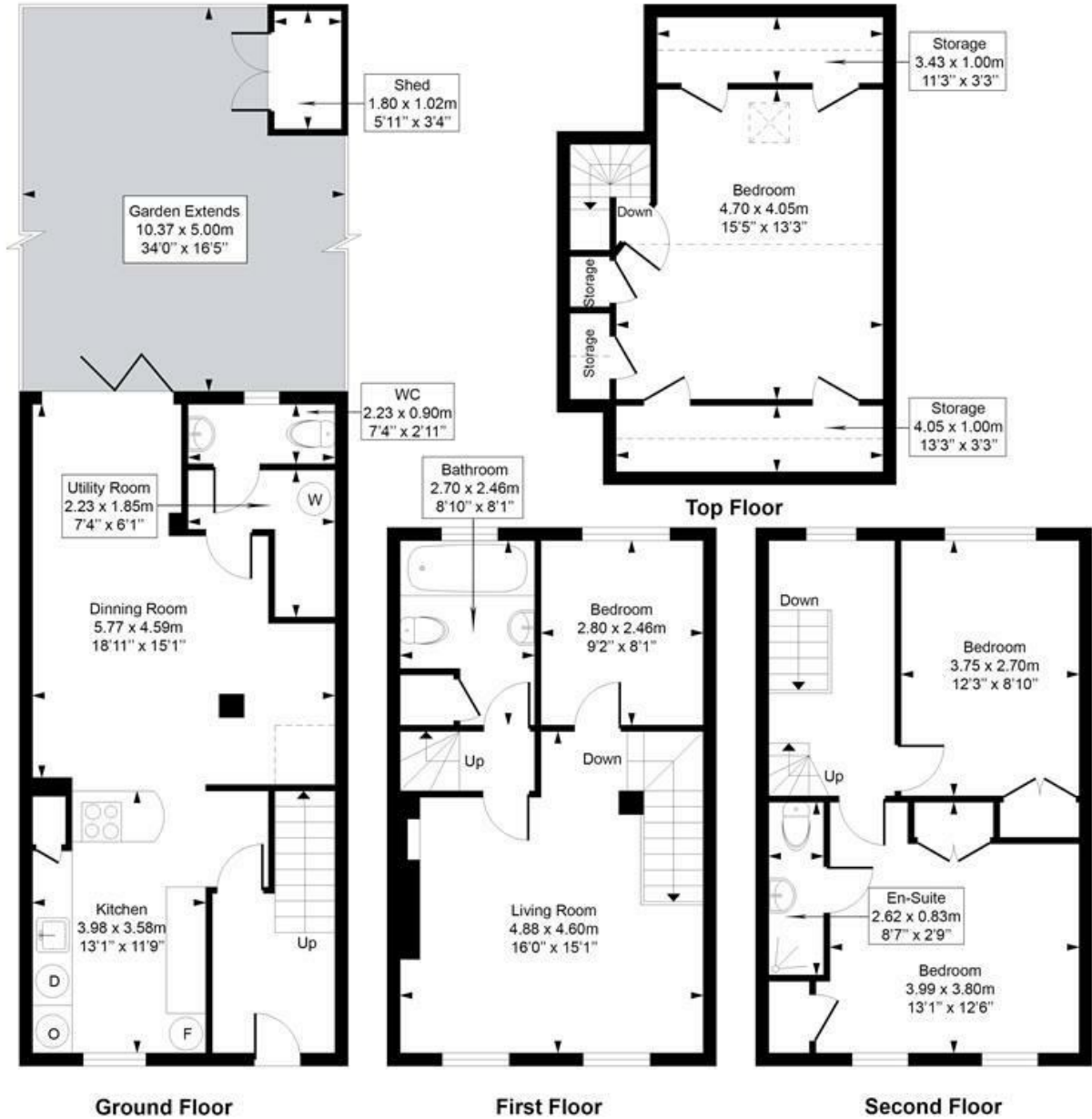
First floor reception room

2 bathrooms (1 en suite shower room)

EPC: Rating: D, Council Tax: Camden band F

## Agamemnon Road

Approximate Gross Internal Area = 170.5 Sq m / 1835 sq ft (Including Shed, Storage)  
 Approximate Gross Internal Area = 160.7 Sq m / 1729 sq ft (Excluding Shed, Storage)



Measured in accordance with RICS guidelines. Every attempt is made to ensure accuracy  
 However all measurements are approximate.  
 The floor plan is illustrative purposes only and is not to scale  
 ELLIE CLAIRE PHOTOGRAPHY LTD  
[www.ellieclairephotography.com](http://www.ellieclairephotography.com)

The particulars do not constitute part of an offer or contract. The particulars, including text, photographs and plans, are for the guidance only of prospective purchasers/tenants and must not be relied upon as statements of fact. The descriptions provided therein represent the opinion of the author and whilst given in good faith should not be construed as statements of fact. Nothing in these particulars shall be deemed a statement that the property is in good condition or otherwise or that any services or facilities are in good working order. All measurements are approximate