



Greencroft Gardens NW6

Parkheath  
*Sold on Service*





## Greencroft Gardens, NW6

### £1,295,000

### Share of Freehold

- Expansive 3 bedroom, 2 bathroom apartment
- Split level flat on the second and third floors of a period converted house
- 1453 sq ft / 135 sq m
- 16'10 master bedroom with en-suite bathroom
- Further two double bedrooms
- South facing and very spacious 35' open plan reception/kitchen with eaves storage
- South Hampstead conservation area location
- 7 minute walk to Finchley road station (Jubilee and Metropolitan lines)
- Air conditioning in reception room plus balcony
- Share of Freehold and chain free. (EPC: Rating C, Council Tax: Camden D)

Belsize Park/Hampstead  
208 Haverstock Hill  
NW3 2AG  
Sales 020 7431 1234  
Lettings 020 7431 3104  
[nw3@parkheath.com](mailto:nw3@parkheath.com)

South/West Hampstead  
192 West End Lane  
NW6 1SG  
Sales & Lettings  
Tel 020 7794 7111  
[192@parkheath.com](mailto:192@parkheath.com)

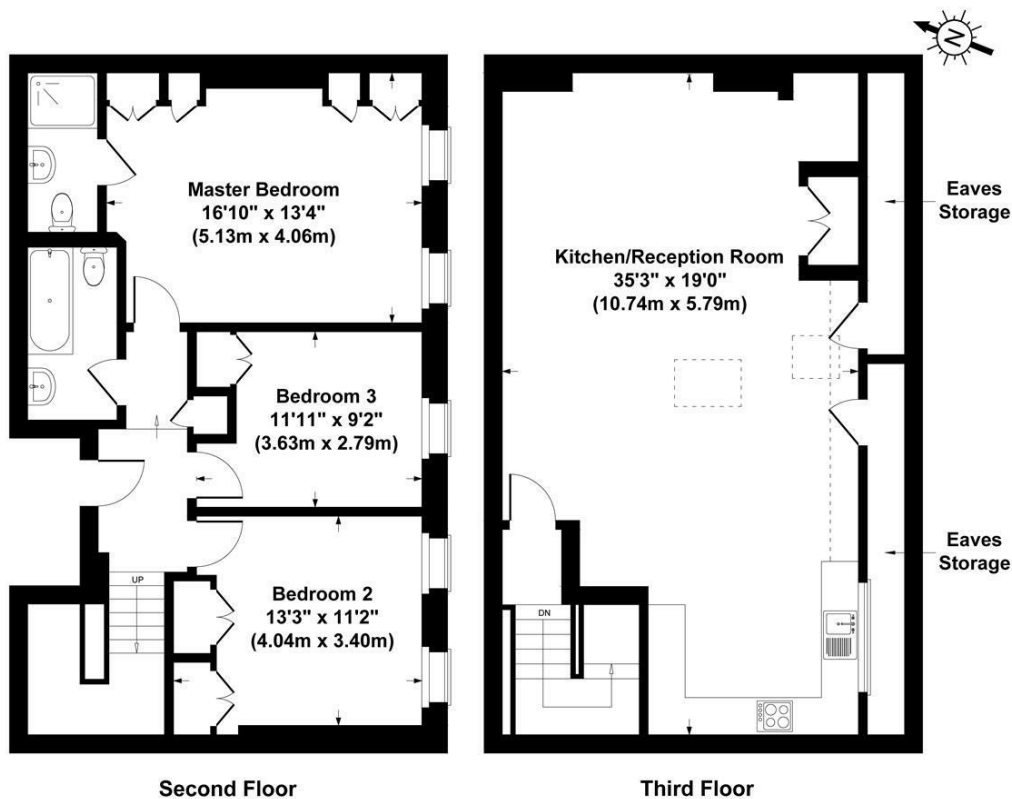
Kensal Rise  
54-56 Chamberlayne Rd  
NW10 3JH  
Tel 020 8960 4845  
[kensal@parkheath.com](mailto:kensal@parkheath.com)

Property Management  
192 West End Lane  
NW6 1SG  
020 7433 6174  
[pm@parkheath.com](mailto:pm@parkheath.com)

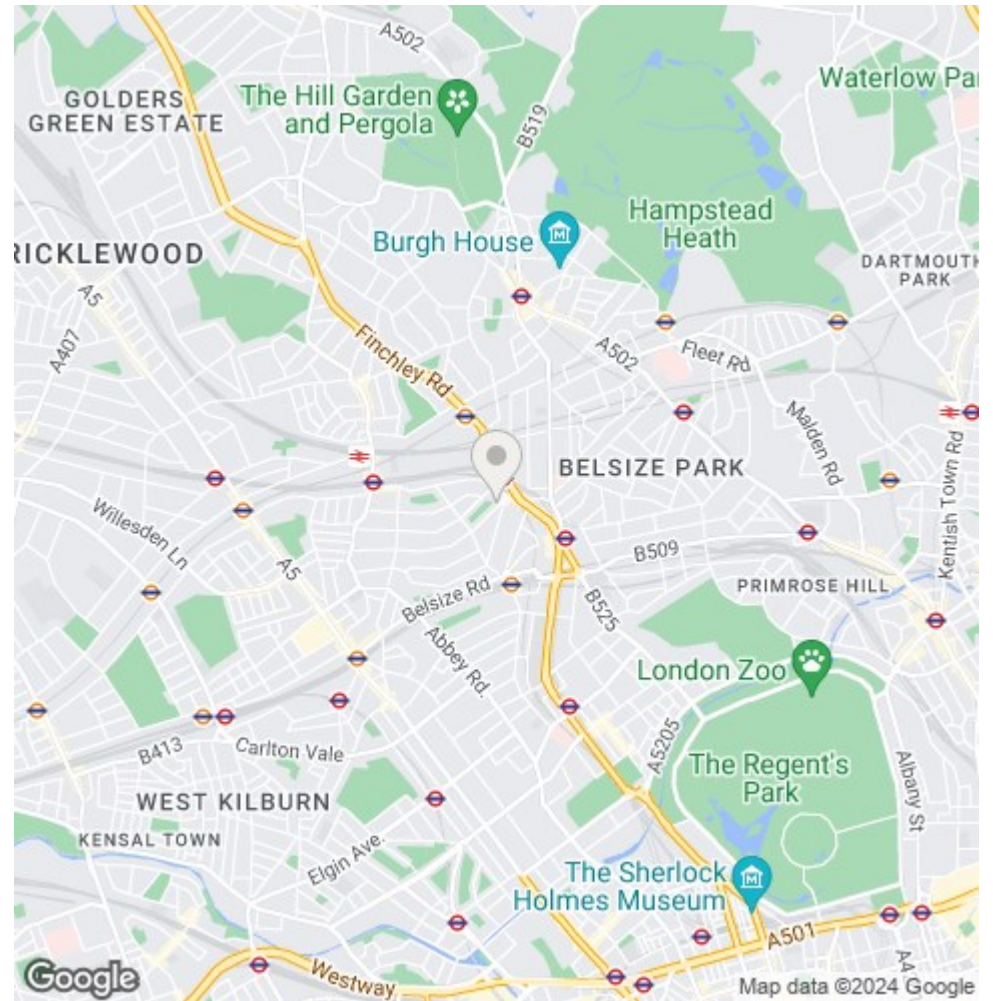
[www.parkheath.com](http://www.parkheath.com)

**Parkheath**  
*Sold on Service*

**Camden Tax band D**



**Greencroft Gardens, NW6**  
 Gross Internal Area 1453 sq ft / 135 sq metres  
 Not to Scale. Produced by The Plan Portal 2022  
 For Illustrative Purposes Only.



The particulars do not constitute part of an offer or contract. The particulars, including text, photographs and plans, are for the guidance only of prospective purchasers/tenants and must not be relied upon as statements of fact. The descriptions provided therein represent the opinion of the author and whilst given in good faith should not be construed as statements of fact. Nothing in these particulars shall be deemed a statement that the property is in good condition or otherwise or that any services or facilities are in good working order. All measurements are approximate