

Parkheath

Sold on Service

Broadhurst Gardens NW6

£3,467 PCM (£800 per week) - Camden Band G



Attractive 3 bedroom apartment

3rd floor (top) conversion with lift access

Lateral accommodation

Modern fitted kitchen with integrated appliances

Footsteps to Finchley Road underground

944 Sq Ft / 87.70 Sq M

2 balconies

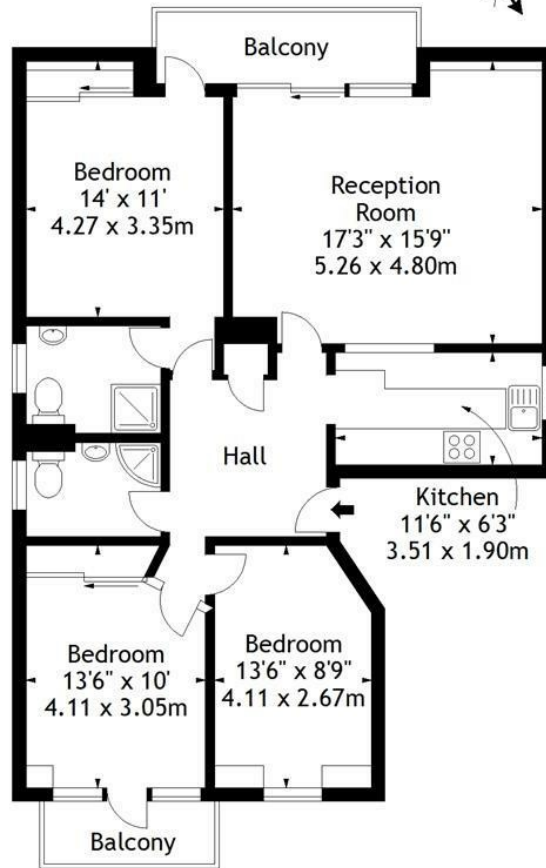
Wooden floors throughout

2 shower rooms

EPC: Rating D, Council Tax: Camden band G

West Hampstead Office 020 7794 7111

Broadhurst Gardens, NW6
Approx. Gross Internal Area
944 Sq Ft - 87.70 Sq M



Third Floor

Measured in accordance with RICS guidelines. Every attempt is made to ensure accuracy, however all measurements are approximate. This floor plan is for illustrative purposes only and is not to scale.
© Datography Ltd 2015
Photographs * Floorplans * Virtual Tours
Tel: 0845 643 4401 www.datography.com

The particulars do not constitute part of an offer or contract. The particulars, including text, photographs and plans, are for the guidance only of prospective purchasers/tenants and must not be relied upon as statements of fact. The descriptions provided therein represent the opinion of the author and whilst given in good faith should not be construed as statements of fact. Nothing in these particulars shall be deemed a statement that the property is in good condition or otherwise or that any services or facilities are in good working order. All measurements are approximate