



Gilbey House, Jamestown Road NW1

Parkheat
Sold on Service





Gilbey House, Jamestown Road, NW1 £625,000

- Very spacious 1 bedroom apartment
- Set within impressive mansion building
- Second floor apartment with front to back aspect overlooking canal
- Concierge service plus gym and sauna
- 771 sq ft / 71.6 sq m
- Bright and uniquely impressive 27' reception room
- Separate 'eat in' fully fitted kitchen
- Large double bedroom with fitted storage overlooking canal
- Fantastic location in Camden with Primrose Hill on the doorstep
- Convenient 4 minute walk to Camden underground station (Northern Line)

Belsize Park/Hampstead
208 Haverstock Hill
NW3 2AG
Sales 020 7431 1234
Lettings 020 7431 3104
nw3@parkheath.com

South/West Hampstead
192 West End Lane
NW6 1SG
Sales & Lettings
Tel 020 7794 7111
192@parkheath.com

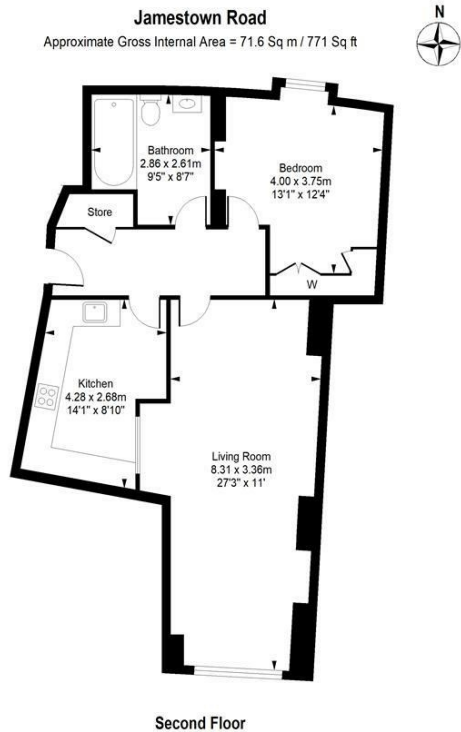
Kensal Rise
54-56 Chamberlayne Rd
NW10 3JH
Tel 020 8960 4845
kensal@parkheath.com

Property Management
192 West End Lane
NW6 1SG
020 7433 6174
pm@parkheath.com

Parkheath
Sold on Service

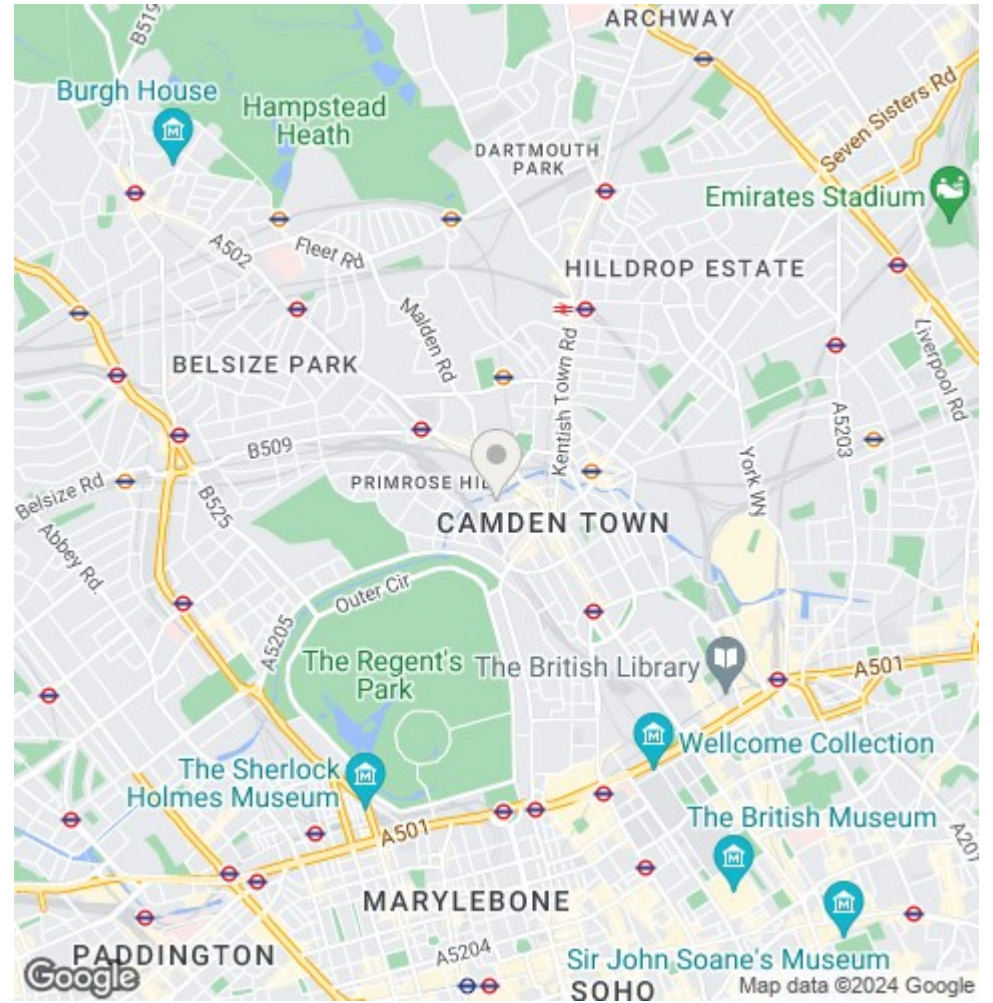
Camden Tax band F

www.parkheath.com



This plan is for layout guidance only. Drawn in accordance with RICS guidelines. Not drawn to scale unless stated. Windows & door openings are approximate. Whilst every care is taken in the preparation of this plan, please check all dimensions, shapes & compass bearings before marking any decisions reliant upon them.

ELLIE CLAIRE PHOTOGRAPHY LTD
www.ellieclairephotography.com



The particulars do not constitute part of an offer or contract. The particulars, including text, photographs and plans, are for the guidance only of prospective purchasers/tenants and must not be relied upon as statements of fact. The descriptions provided therein represent the opinion of the author and whilst given in good faith should not be construed as statements of fact. Nothing in these particulars shall be deemed a statement that the property is in good condition or otherwise or that any services or facilities are in good working order. All measurements are approximate