



Ambassador, Bracknell

Offers in excess of **£425,000**



Ambassador, Bracknell, Berkshire RG12 8XP

Located in the popular area of Little Foxes is this spacious three bedroom semi-detached family home benefiting from garage, driveway parking and front and rear gardens.

FEATURES

- Semi detached
- 1182 sq. ft including garage
- Gas central heating
- Double glazing
- Close to local parks and amenities
- Car port

ACCOMMODATION

- Entrance hall
- Downstairs cloakroom
- Sitting room
- Dining room
- Fitted kitchen
- Three bedrooms
- Walk in cupboard
- Bathroom

OUTSIDE

- Front garden
- Driveway parking
- Garage
- Rear garden

LOCAL AUTHORITY/COUNCIL TAX

Bracknell Forest – Band D

EPC RATING

D



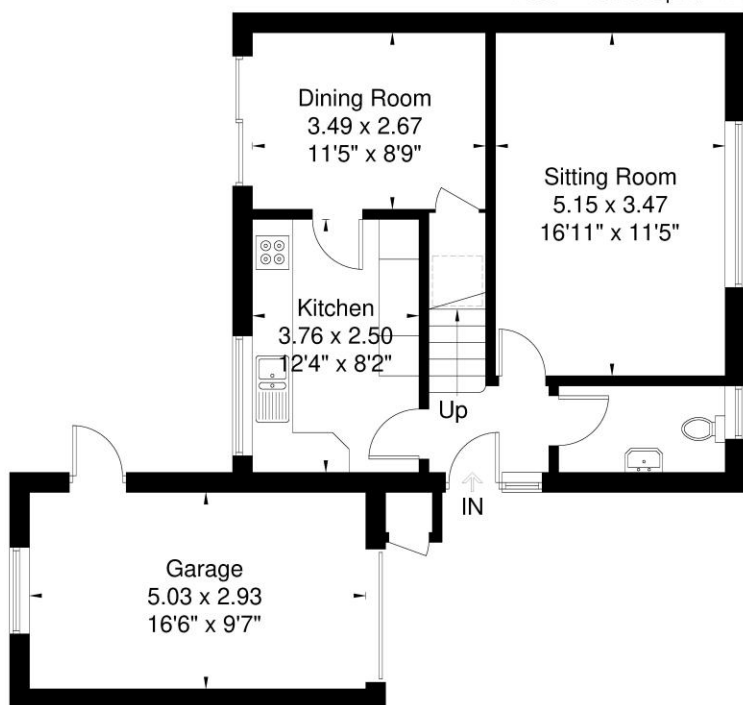


Ambassador

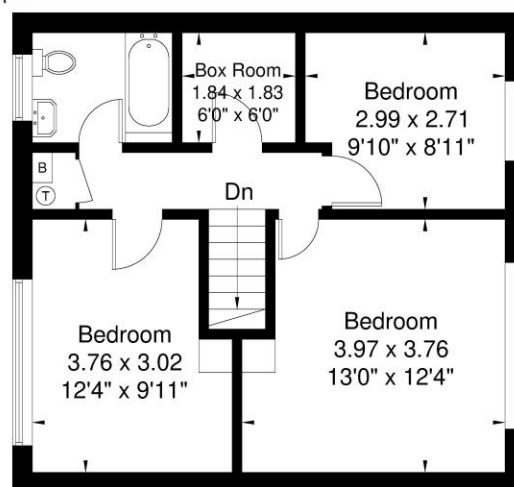
Approximate Gross Internal Area = 95 sq m / 1022 sq ft

Garage = 14.9 sq m / 160 sq ft

Total = 109.9 sq m / 1182 sq ft



Ground Floor



First Floor

Illustration for identification purposes only,
measurements are approximate, not to scale.

Disclaimer: We wish to inform prospective purchasers that we have prepared these sales particulars as a general guide. We have not carried out a detailed survey, nor tested the services, appliances and specific fittings. Room sizes are approximate and rounded: they are taken between internal wall surfaces and therefore include cupboards / shelves, etc. Accordingly, they should not be relied upon for carpeting, curtains / blinds.



NEWTON ROWE
SALES & LETTINGS

The Old Dairy, 7 Updown Hill, Windlesham, Surrey GU20 6AF
enquiries@newtonrowe.co.uk | 01276 986900