



Kennel Lane, Windlesham

£700,000



Primrose Cottage, Kennel Lane, Windlesham

This attractive three bedroom semi detached period cottage in Windlesham has been extended and lovingly refurbished with a beautiful interior.

FEATURES

- Extended and refurbished in 2017
- Open fireplace (used to house a log burner)
- Farrow and ball colour shades
- Conservation area
- Sash windows replaced 5 years ago
- Shutters to front windows
- Impressive open plan kitchen with roof lantern

ACCOMMODATION

- Front entrance porch
- Sitting room
- Kitchen/dining room
- Study
- Downstairs shower room/cloakroom
- Ground floor bedroom
- Master bedroom en-suite
- Second upstairs bedroom

OUTSIDE

- Gravel driveway to front
- Gated side access
- Large decked patio
- Mature landscaped large garden with shed

EPC RATING

C

LOCAL AUTHORITY/COUNCIL TAX

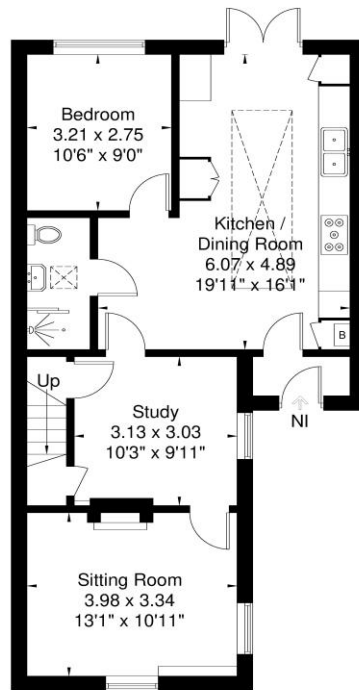
Surrey Heath – Band D



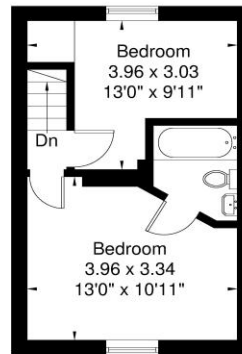


Kennel Lane

Approximate Gross Internal Area = 92.2 sq m / 992 sq ft



Ground Floor

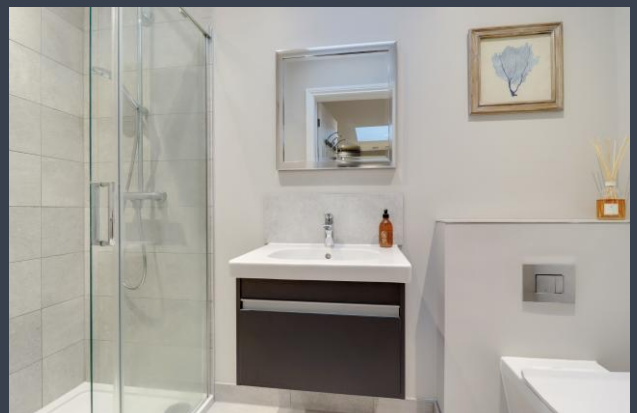


First Floor

Illustration for identification purposes only,
measurements are approximate, not to scale.

Disclaimer: We wish to inform prospective purchasers that we have prepared these sales particulars as a general guide. We have not carried out a detailed survey, nor tested the services, appliances and specific fittings. Room sizes are approximate and rounded: they are taken between internal wall surfaces and therefore include cupboards / shelves, etc. Accordingly, they should not be relied upon for carpeting, curtains / blinds and kitchen equipment, whether fitted or not, are deemed removable by the vendor unless specifically itemized within these.

Postcode for sat nav: GU20 6AA



The Old Dairy, 7 Updown Hill, Windlesham, Surrey GU20 6AF
enquiries@newtonrowe.co.uk | 01276 986900