



Lower Village Road, Sunninghill

£640,000



Lower Village Road, Sunninghill, Berkshire SL5 7AU

Three bedroom Victorian cottage with period features, located in Sunninghill with a mature garden extending to over 100ft and backing onto woodland.

FEATURES

- Charters school catchment
- Open fire
- Feature fireplaces
- Stripped pine doors
- Kitchen with Aga
- Bay fronted
- Sash windows
- Gas central heating

ACCOMODATION

- Entrance porch
- Downstairs cloakroom
- Living room with fireplace
- Dining room with fireplace
- Three bedrooms

OUTSIDE

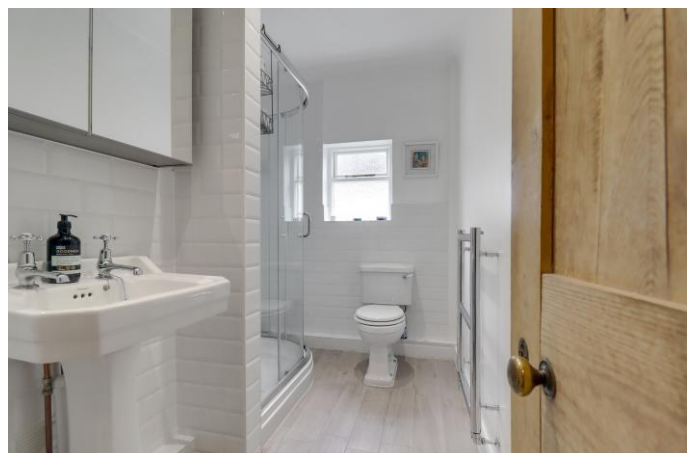
- Mature long rear garden backing onto woodland
- Driveway parking

LOCAL AUTHORITY/COUNCIL TAX

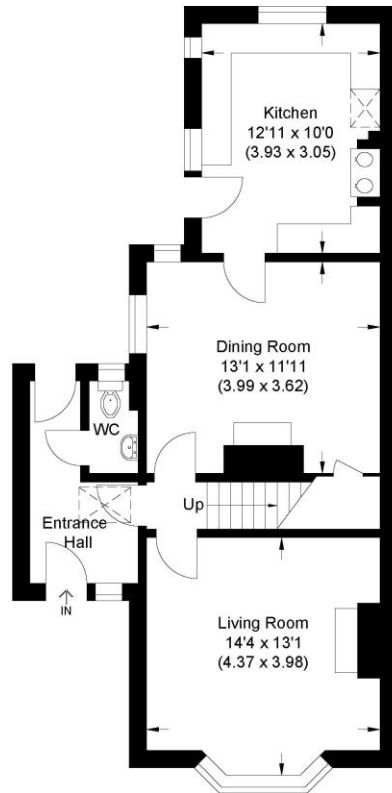
Windsor & Maidenhead - Band E

EPC RATING

F

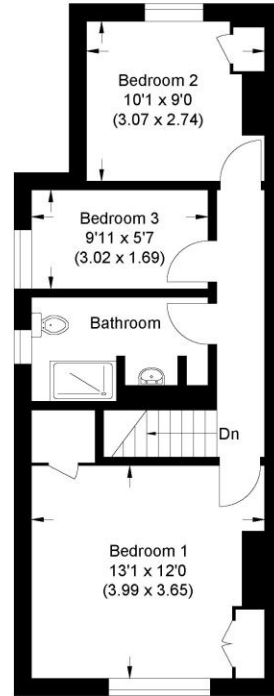






Ground Floor

Approximate Gross Internal Area
98.20 sq m / 1057.01 sq ft



First Floor

Illustration for identification purposes only, measurements are approximate, not to scale.

Disclaimer: We wish to inform prospective purchasers that we have prepared these sales particulars as a general guide. We have not carried out a detailed survey, nor tested the services, appliances and specific fittings. Room sizes are approximate and rounded; they are taken between internal wall surfaces and therefore include cupboards / shelves, etc. Accordingly, they should not be relied upon for carpeting, curtains / blinds and kitchen equipment, whether fitted or not, are deemed removable by the vendor unless specifically itemized within these.



The Old Dairy, 7 Updown Hill, Windlesham, Surrey GU20 6AF
enquiries@newtonrowe.co.uk | 01276 986900