



Post House Mews, Windlesham

£550,000



Post House Mews, Windlesham

Built in 2019 by Runneymede Homes to an exceptional finish, this two double bedroom, two bathroom executive home is located in a private cul-de-sac in the centre of Windlesham village, close to the village shops.

FEATURES

- Built in 2019 by Runneymede Homes
- High quality specification
- Under floor heating (wet system)
- Bi-fold doors
- 10 year NHBC warranty from new
- Electric car charging point
- Kitchen by Wooden Heart of Weybridge
- Fitted wardrobes

ACCOMODATION

- Entrance Hall
- Downstairs cloakroom
- Open plan sitting/dining room
- Modern fitted kitchen
- Two double bedrooms, both en-suite

OUTSIDE

- Car barn/car port
- Parking for two cars in tandem
- Private rear garden

SERVICE CHARGES

Service charge – TBC

LOCAL AUTHORITY

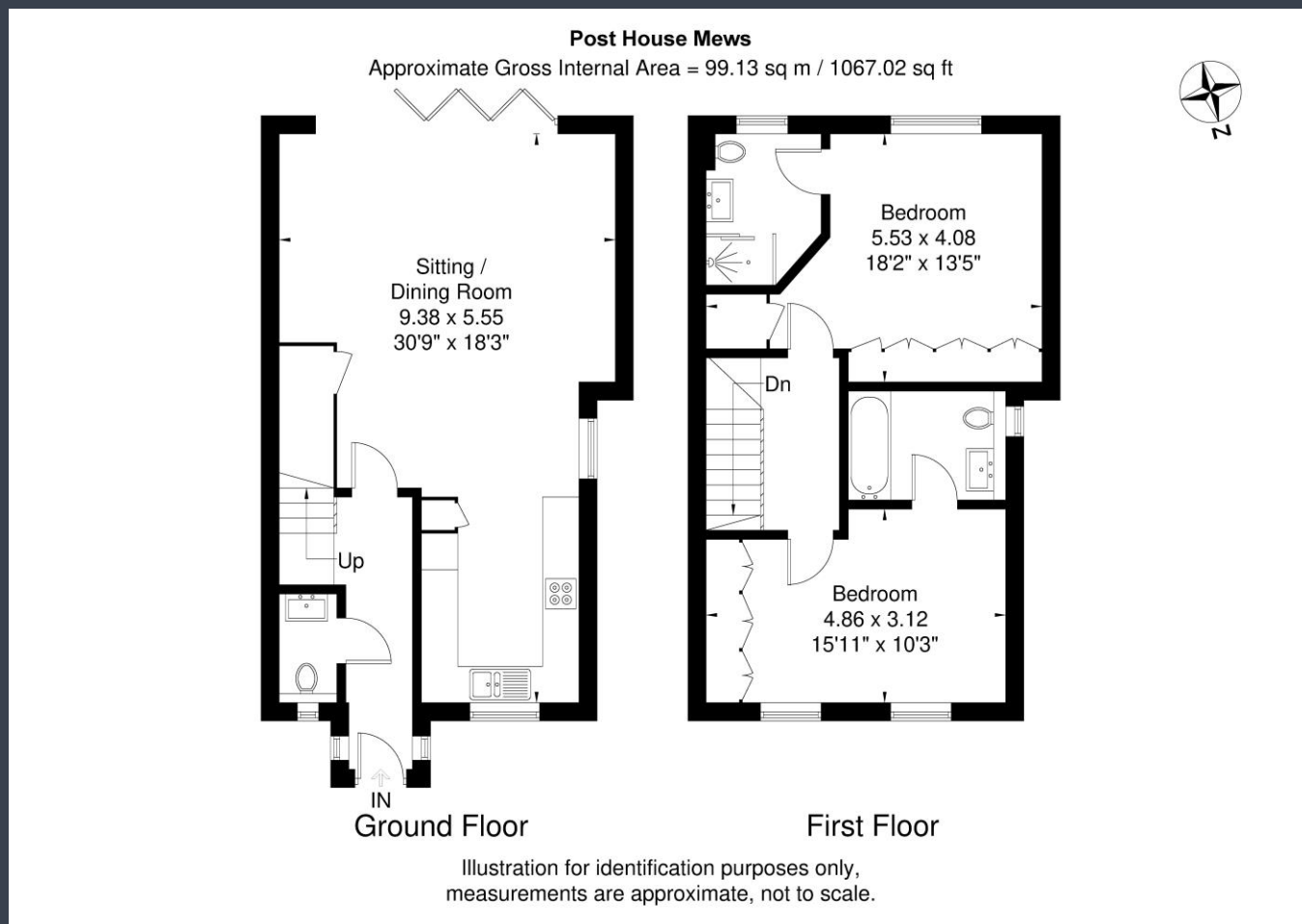
Surrey Heath – band D

EPC RATING

B







Disclaimer: We wish to inform prospective purchasers that we have prepared these sales particulars as a general guide. We have not carried out a detailed survey, nor tested the services, appliances and specific fittings. Room sizes are approximate and rounded: they are taken between internal wall surfaces and therefore include cupboards / shelves, etc. Accordingly, they should not be relied upon for carpeting, curtains / blinds and kitchen equipment, whether fitted or not, are deemed removable by the vendor unless specifically itemized within these.

Postcode for sat nav: GU20 6AX

