



Chewter Lane, Windlesham

**£775,000**



## Chewter Lane, Windlesham

An extended and modernised four bedroom detached home on the popular Snobs Ride development in Windlesham. The stylish home has a large family room converted from the garage and a stunning open plan kitchen/dining room with shaker style kitchen.

### FEATURES

- Possible annexe type accommodation
- Modernised family home
- Corner plot
- Garage converted around 3 years ago
- Impressive kitchen/dining room
- Double glazing
- Gas central heating

### ACCOMMODATION

- Entrance hall
- Downstairs cloakroom
- Sitting room
- Kitchen/dining room
- Family room
- Ground floor shower room
- Four bedrooms
- Modern bathroom

### OUTSIDE

- Gated side access
- Driveway parking
- Rear garden with patio

### COUNCIL TAX

Surrey Heath – Band F

### EPC RATING

C







### Chewter Lane

Approximate Gross Internal Area = 145.7 sq m / 1568 sq ft

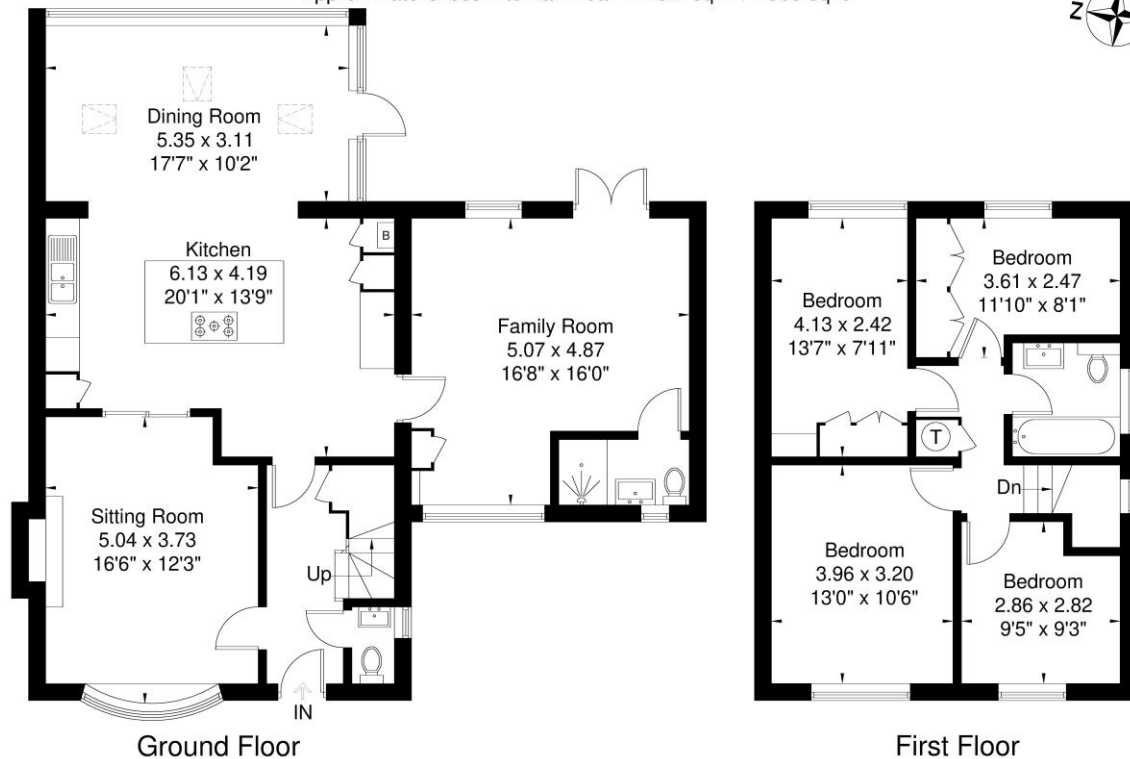


Illustration for identification purposes only, measurements are approximate, not to scale.

**Disclaimer:** We wish to inform prospective purchasers that we have prepared these sales particulars as a general guide. We have not carried out a detailed survey, nor tested the services, appliances and specific fittings. Room sizes are approximate and rounded: they are taken between internal wall surfaces and therefore include cupboards / shelves, etc. Accordingly, they should not be relied upon for carpeting, curtains / blinds and kitchen equipment, whether fitted or not, are deemed removable by the vendor unless specifically itemized within these.

Postcode for sat nav: **GU20 6JP**



**NEWTON ROWE**  
SALES & LETTINGS

The Old Dairy, 7 Updown Hill, Windlesham, Surrey GU20 6AF  
enquiries@newtonrowe.co.uk | 01276 986900