



Snows Ride, Windlesham

£1,300,000



Snows Ride, Windlesham GU20 6DJ

Dating back to the 1800's Treetops is an impressive, individual period home with over 2500 sq. ft of accommodation within a mature plot of around 1/3 acre in the rural village of Windlesham.

FEATURES

Set back from the road
Approx. 1/3 acre plot
Over 2500 sq ft
Wood burner
Period features
Impressive extension with vaulted ceiling
and bi-fold doors onto a courtyard patio

ACCOMODATION

4 bedrooms
2 bath/shower rooms
4 reception rooms
Pantry
Utility
Cloakroom

OUTSIDE

Barn style double car port
Gravel driveway
Mature front and side gardens
Herb garden

LOCAL AUTHORITY

Surrey Heath – Band G

EPC RATING

C





Approximate Gross Internal Area
230.49 sq m / 2480.97 sq ft



Ground Floor



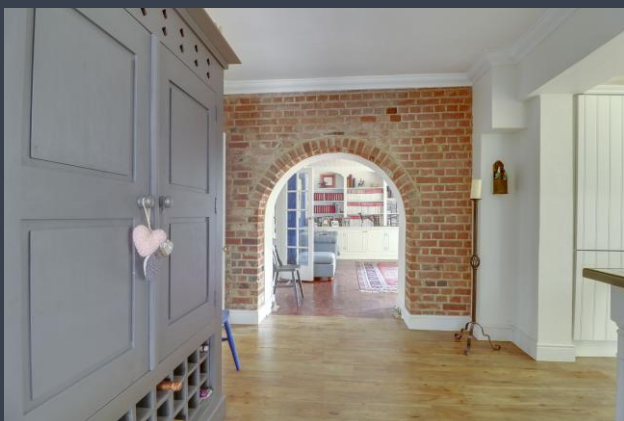
First Floor

Illustration for identification purposes only, measurements are approximate, not to scale.

Disclaimers: We wish to inform prospective purchasers that we have prepared these sales particulars as a general guide. We have not carried out a detailed survey, nor tested the services, appliances and specific fittings. Room sizes are approximate and rounded: they are taken between internal wall surfaces and therefore include cupboards / shelves, etc. Accordingly, they should not be relied upon for carpeting, curtains / blinds and kitchen equipment, whether fitted or not, are deemed removable by the vendor unless specifically itemized within these.

N.B In accordance with the estate agency act we are obliged to point out that the owner of the property is an employee of Newton Rowe Ltd

Postcode for sat nav: GU20 6LA



The Old Dairy, 7 Updown Hill, Windlesham, Surrey GU20 6AF
enquiries@newtonrowe.co.uk | 01276 986900