

# NEWTON ROWE

SALES & LETTINGS



Updown Hill, Windlesham

**£1,000 PCM**



## Updown Hill, Windlesham GU20 6AF

One bedroom flat situated above the shops in Windlesham therefore located in the centre of the village with easy access to all the local amenities and close to the very popular pubs.

### FEATURES

Own front door  
Gas central heating

### ACCOMODATION

Living room  
Double bedroom  
Large walk-in closet/storage cupboard  
Bathroom  
Fitted kitchen

### FURNISHED/UNFURNISHED

Unfurnished

### AVAILABLE

13<sup>th</sup> June 2025

### DEPOSIT PAYABLE

£1,150

### EPC RATING

E

### COUNCL TAX

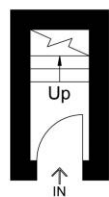
Surrey Heath Borough Council – Band B



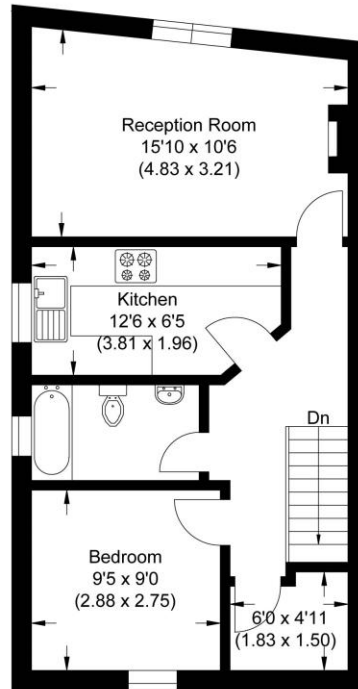




Approximate Gross Internal Area  
48.0 sq m / 516.66 sq ft



Ground Floor

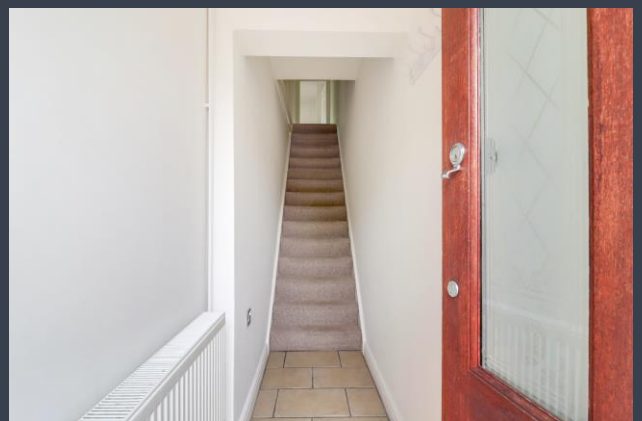


First Floor

Illustration for identification purposes only, measurements are approximate, not to scale.

**Disclaimer:** We wish to inform prospective tenants that we have prepared these sales particulars as a general guide. We have not carried out a detailed survey, nor tested the services, appliances and specific fittings. Room sizes are approximate and rounded: they are taken between internal wall surfaces and therefore include cupboards / shelves, etc.

**Postcode for sat nav: GU20 6AF**



The Old Dairy, 7 Updown Hill, Windlesham, Surrey GU20 6AF  
enquiries@newtonrowe.co.uk | 01276 986900