



Chobham Road, Sunningdale

£575,000



## Chobham Road, Sunningdale

This end terrace of terrace three bedroom house is located centrally in Sunningdale just a short walk from the mainline station, Waitrose, local shops and Chobham Common.

### FEATURES

- No onward chain
- Property currently let
- Charters school catchment
- Central location
- Nearby to local brasseries and Costa
- End of terrace
- Built in wardrobes to main bedroom

### ACCOMMODATION

- Entrance hall
- Downstairs cloakroom
- Living/dining room
- Fitted kitchen
- Three bedrooms
- Two bathrooms

### OUTSIDE

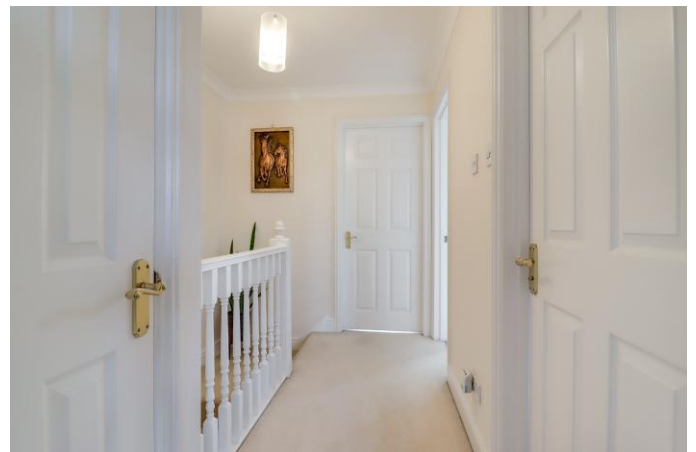
- Driveway parking
- Garage
- Low maintenance rear garden

### EPC RATING

D

### LOCAL AUTHORITY/COUNCIL TAX

Windsor and Maidenhead – Band F







Approximate Gross Internal Area  
81.49 sq m / 877.15 sq ft  
(Excludes Garage)  
Garage Area 16.40 sq m / 176.52 sq ft

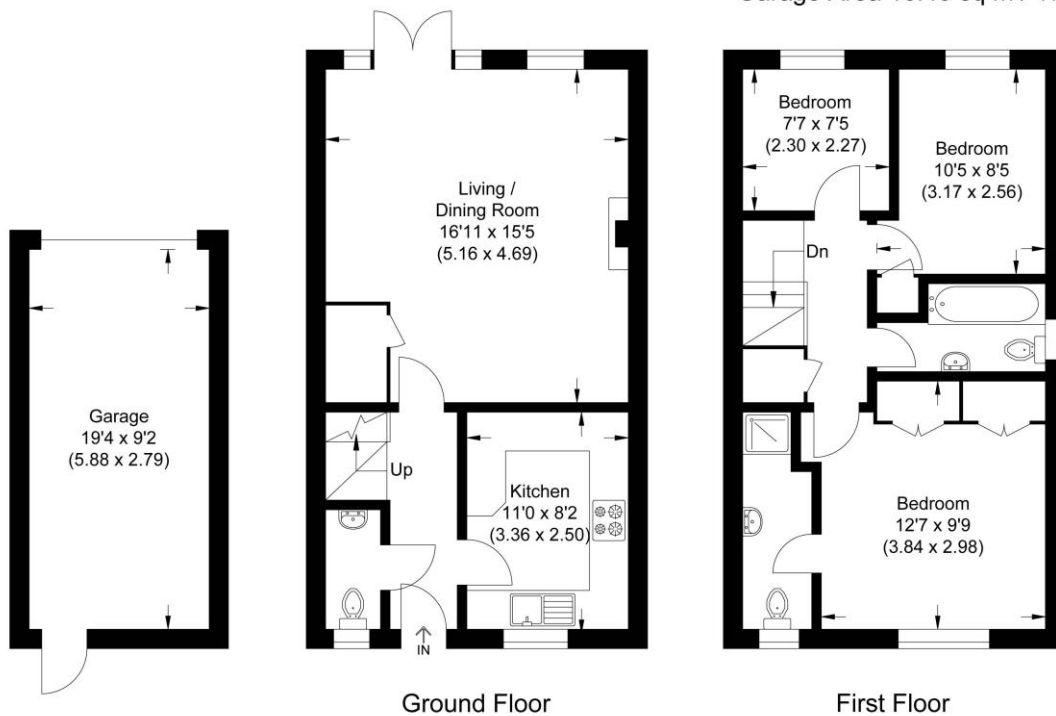


Illustration for identification purposes only, measurements are approximate, not to scale.

**Disclaimer:** We wish to inform prospective purchasers that we have prepared these sales particulars as a general guide. We have not carried out a detailed survey, nor tested the services, appliances and specific fittings. Room sizes are approximate and rounded: they are taken between internal wall surfaces and therefore include cupboards / shelves, etc. Accordingly, they should not be relied upon for carpeting, curtains / blinds and kitchen equipment, whether fitted or not, are deemed removable by the vendor unless specifically itemized within these.

Postcode for sat nav: **SL5 0HE**



**NEWTON ROWE**  
SALES & LETTINGS

The Old Dairy, 7 Updown Hill, Windlesham, Surrey GU20 6AF  
enquiries@newtonrowe.co.uk | 01276 986900