



Fosters Grove, Windlesham

£900,000



Fosters Grove, Windlesham, Surrey

Attractive Charles Church built five bedroom detached house of over 2061 sq. ft including the detached double garage on the popular Snobs Ride estate in Windlesham. No onward chain.

FEATURES

- No onward chain
- 2061 sq ft
- Detached
- Impressive master bedroom suite with dressing room
- Gas central heating
- Built in wardrobes
- Short drive to Sunningdale mainline train station
- Good access to A30 and junction 3 of the M3

ACCOMMODATION

- Covered entrance porch
- Entrance hall
- Downstairs cloakroom
- Kitchen/breakfast room with island
- Sitting room
- Dining room
- Study
- Utility room
- Four bedrooms (two with en-suite bathrooms)
- Family bathroom

OUTSIDE

- Driveway parking
- Detached double garage
- Part walled rear garden

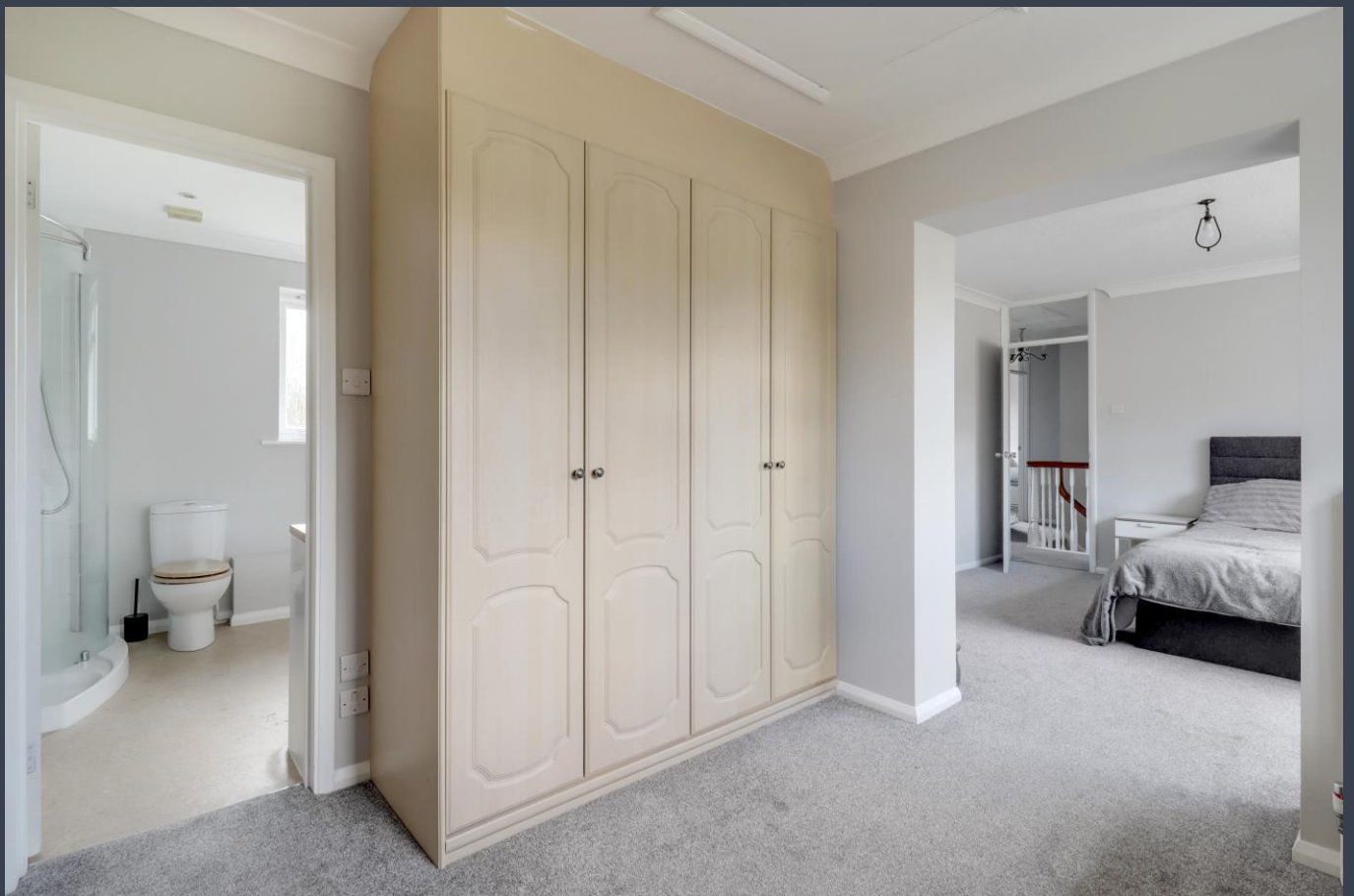
EPC RATING

D

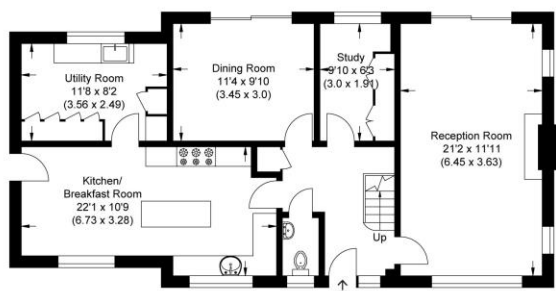
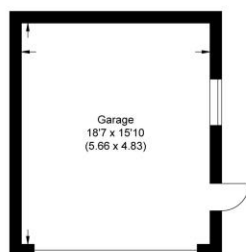
LOCAL AUTHORITY/COUNCIL TAX BAND

Surrey Heath – Band G

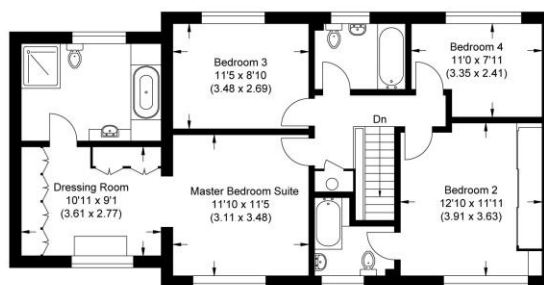




Approximate Gross Internal Area
191.48 sq m / 2061.07 sq ft
(Includes Garage)
Garage Area 27.34 sq m / 294.28 sq ft



Ground Floor

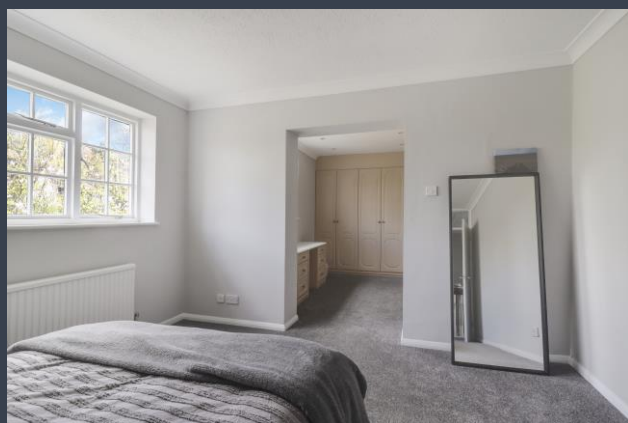


First Floor

Illustration for identification purposes only, measurements are approximate, not to scale.

Disclaimer: We wish to inform prospective purchasers that we have prepared these sales particulars as a general guide. We have not carried out a detailed survey, nor tested the services, appliances and specific fittings. Room sizes are approximate and rounded: they are taken between internal wall surfaces and therefore include cupboards / shelves, etc. Accordingly, they should not be relied upon for carpeting, curtains / blinds and kitchen equipment, whether fitted or not, are deemed removable by the vendor unless specifically itemized within these.

Postcode for sat nav: GU20 6JZ



The Old Dairy, 7 Updown Hill, Windlesham, Surrey GU20 6AF
enquiries@newtonrowe.co.uk | 01276 986900