



Newark Road, Windlesham

£450,000
Offers in Excess Of



Newark Road, Windlesham, Surrey GU20 6NE

An extended and modernised three bedroom home in a courtyard setting on the popular Snows Ride development. The immaculate house with stylish modern décor also has a garage.

FEATURES

- Snows Ride development built by Charles Church
- Courtyard setting
- Covered entrance porch
- Extended to provide additional reception room
- Double glazing
- Gas central heating with new boiler 3-4 years ago

ACCOMODATION

- Entrance Hall
- Two reception rooms
- Downstairs cloakroom
- Modern fitted kitchen
- Three bedrooms
- Bathroom

OUTSIDE

- Garage with parking space in front and behind
- Lovely garden with patio and decked terrace
- Gated pathway to rear leading to the garage
- Further garden area and parking space behind garage

LOCAL AUTHORITY

Surrey Heath – band E

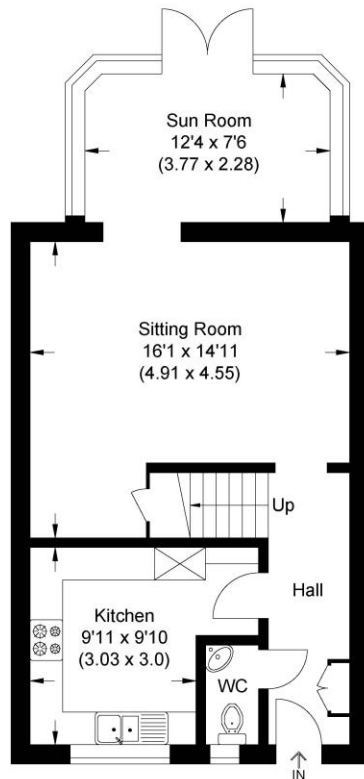
EPC RATING

C

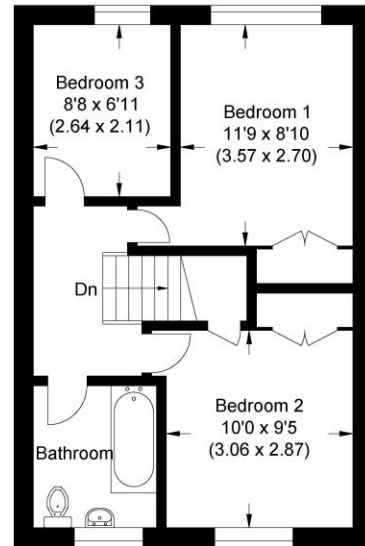




Approximate Gross Internal Area
86.0 sq m / 926.0 sq ft



Ground Floor



First Floor



Illustration for identification purposes only, measurements are approximate, not to scale.

Disclaimer: We wish to inform prospective purchasers that we have prepared these sales particulars as a general guide. We have not carried out a detailed survey, nor tested the services, appliances and specific fittings. Room sizes are approximate and rounded: they are taken between internal wall surfaces and therefore include cupboards / shelves, etc. Accordingly, they should not be relied upon for carpeting, curtains / blinds and kitchen equipment, whether fitted or not, are deemed removable by the vendor unless specifically itemized within these.

Postcode for sat nav: GU20 6NE



The Old Dairy, 7 Updown Hill, Windlesham, Surrey GU20 6AF
enquiries@newtonrowe.co.uk | 01276 986900