

Longcross Church
Approximate Gross Internal Area 93.21 sq m / 1003.30 sq ft

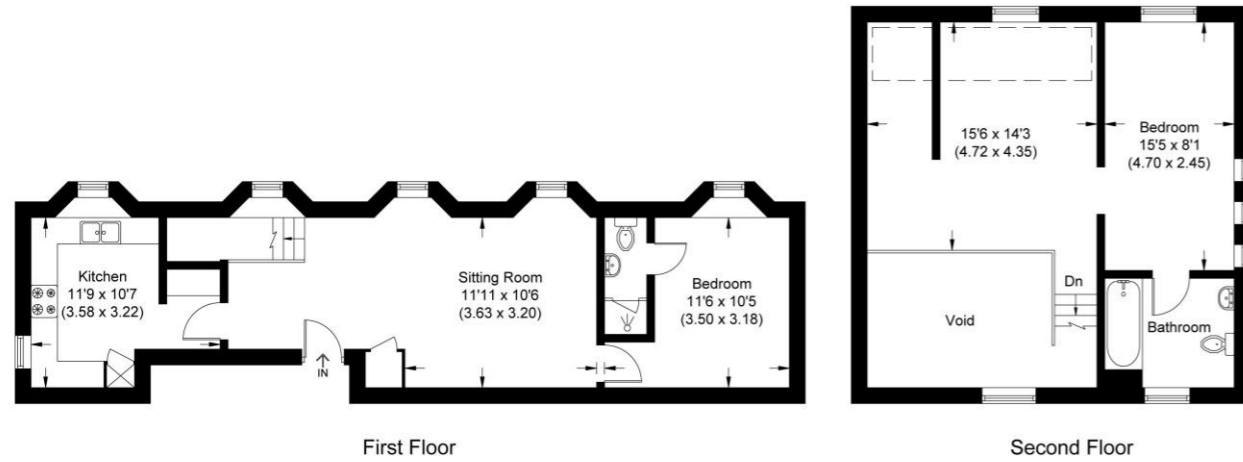


Illustration for identification purposes only,
measurements are approximate, not to scale.

Disclaimer: We wish to inform prospective purchasers that we have prepared these sales particulars as a general guide. We have not carried out a detailed survey, nor tested the services, appliances and specific fittings. Room sizes are approximate and rounded: they are taken between internal wall surfaces and therefore include cupboards / shelves, etc. Accordingly, they should not be relied upon for carpeting, curtains / blinds and kitchen equipment, whether fitted or not, are deemed removable by the vendor unless specifically itemised within these particulars.

Postcode for sat nav: KT16 0DZ



Longcross Church, Longcross

£425,000



The Old Dairy, 7 Updown Hill, Windlesham, Surrey GU20 6AF
enquiries@newtonrowe.co.uk | 01276 986900

www.newtonrowe.co.uk





Longcross Church, Longcross

Nearing the final stages of construction, a choice of two first floor, split level, unique apartments forming part of the conversion of Longcross Church, a stunning Grade II listed building in Longcross originally built in 1847.

FEATURES

- Grade II listed church conversion
- Original stained glass windows
- Vaulted ceilings
- Exposed beams
- Feature windows
- All new kitchen appliances
- No chain
- Close to Chobham Common

ACCOMMODATION

- Church vestibule
- Communal hallway with impressive staircase
- Modern fitted kitchen
- Two Bedrooms
- Two bath/shower rooms

OUTSIDE

- Communal garden

LOCAL AUTHORITY/COUNCIL TAX

- Runnymede – Band tbc

EPC RATING

- C

LEASE INFORMATION

- 999 year lease
- Service charge/Ground rent £1,000 per annum





