



Windlesham Park, Windlesham

£2,200 PCM



Windlesham Park, Windlesham, Surrey

A unique three storey period property forming part of a large country house in Windlesham with parking and private garden area. The property is approached by way of a shared gravel driveway and courtyard area.

FEATURES

Lovely high ceilings & Sash windows
Gas central heating

ACCOMMODATION

Entrance hall
Ground floor office/bedroom with cloakroom
Open plan living/dining room with working fireplace
Kitchen/breakfast room
Master bedroom with fitted wardrobes and bathroom
Bedroom 2 with fitted wardrobes and bathroom
Second floor storage room

OUTSIDE

Gravel parking area for 2/3 cars
Private, enclosed garden located across the driveway

FURNISHED/UNFURNISHED

Unfurnished

COUNCIL TAX - Surrey Heath - Band F

DEPOSIT PAYABLE - £2,530

EPC RATING - D

AVAILABLE – 1st October 2024

DIRECTIONS

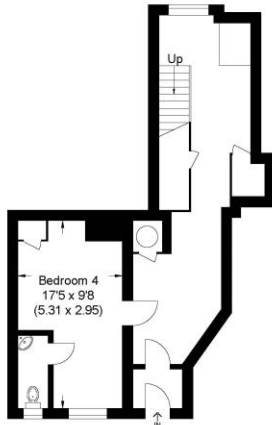
Driving out of Windlesham towards Chobham the property can be found at the end of a shared gravel driveway, just past Rye Grove on the right hand side, with signs at the entrance for Dolphin Cottage and Windlesham Park.



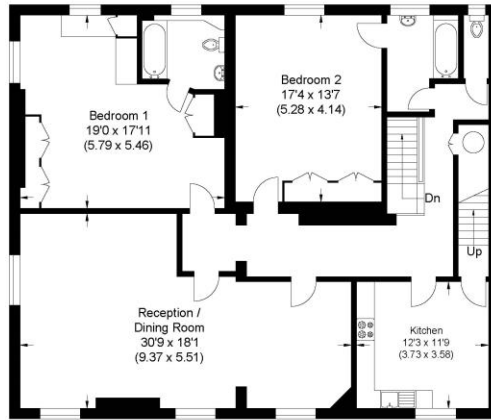




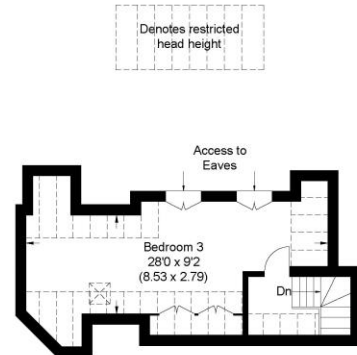
Approximate Gross Internal Area
208.0 sq m / 2239.0 sq ft
(Excluding Restricted Head Height)



Ground Floor



First Floor



Second Floor

Illustration for identification purposes only, measurements are approximate, not to scale.

Disclaimer: We wish to inform prospective purchasers that we have prepared these sales particulars as a general guide. We have not carried out a detailed survey, nor tested the services, appliances and specific fittings. Room sizes are approximate and rounded; they are taken between internal wall surfaces and therefore include cupboards / shelves, etc. Accordingly, they should not be relied upon for carpeting, curtains / blinds and kitchen equipment, whether fitted or not, are deemed removable by the vendor unless specifically itemized within these.

Postcode for sat nav: **GU20 6AT**



NEWTON ROWE
SALES & LETTINGS

The Old Dairy, 7 Updown Hill, Windlesham, Surrey GU20 6AF
enquiries@newtonrowe.co.uk | 01276 986900