



Meadowbank Road, Lightwater

£1,150 pcm



Meadowbank Road, Lightwater Surrey

Opportunity to rent a modern one bedroom first floor maisonette within easy walk of Lightwater village centre.

FEATURES

Own front door
Own garden area to front

ACCOMODATION

Front door with stairs up
Sitting room
Modern fitted kitchen
Bathroom
Double bedroom

OUTSIDE

Garden to the front
Residents parking for one car

COUNCIL TAX

Surrey Heath – Band B

DEPOSIT PAYABLE

£1,325

EPC RATING

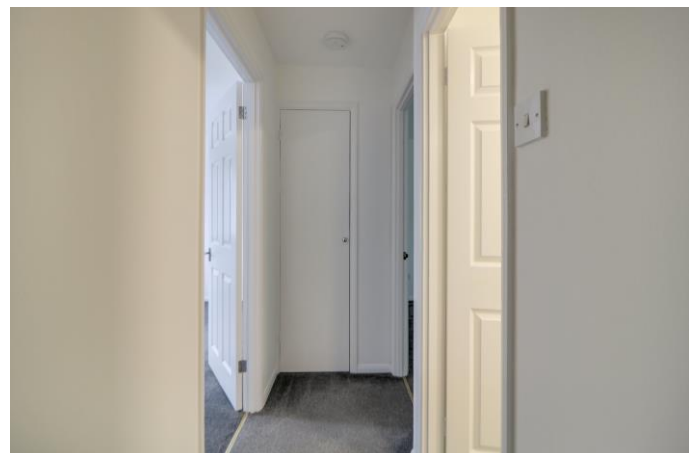
C

FURNISHED/UNFURNISHED

Unfurnished

AVAILABLE

Immediately







Disclaimer: We wish to inform prospective purchasers and tenants that we have prepared these sales particulars as a general guide. We have not carried out a detailed survey, nor tested the services, appliances and specific fittings. Room sizes are approximate and rounded: they are taken between internal wall surfaces and therefore include cupboards / shelves, etc. Accordingly, they should not be relied upon for carpeting, curtains / blinds and kitchen equipment, whether fitted or not, are deemed removable by the vendor unless specifically itemized within these.

Postcode for sat nav: GU18 5SX



NEWTON ROWE
SALES & LETTINGS

The Old Dairy, 7 Updown Hill, Windlesham, Surrey GU20 6AF
enquiries@newtonrowe.co.uk | 01276 986900