



NEWTON | ROWE
SALES & LETTINGS



Cooper Road, Windlesham

£3,000 PCM



Cooper Road, Windlesham

Extended four bedroom family home in Windlesham with impressive kitchen/dining/family room just a short walk from local shops and the Field of Remembrance playing fields.

FEATURES

Short walk to village shops
Gas central heating
Double glazing
Easy access to junction 3 of the M3

ACCOMODATION

Entrance hall
Open plan living room
Stunning open plan kitchen/dining/family room
Bi-fold doors opening onto the patio and garden
Study
Utility room
Downstairs cloakroom
Four bedrooms
Family bathroom

OUTSIDE

Driveway parking
Garage
Garden with large patio area

FURNISHED/UNFURNISHED

Unfurnished

AVAILABLE

16th September 2024 TBC

COUNCIL TAX

Surrey Heath Borough Council – Band F

DEPOSIT PAYBALE

£3,460

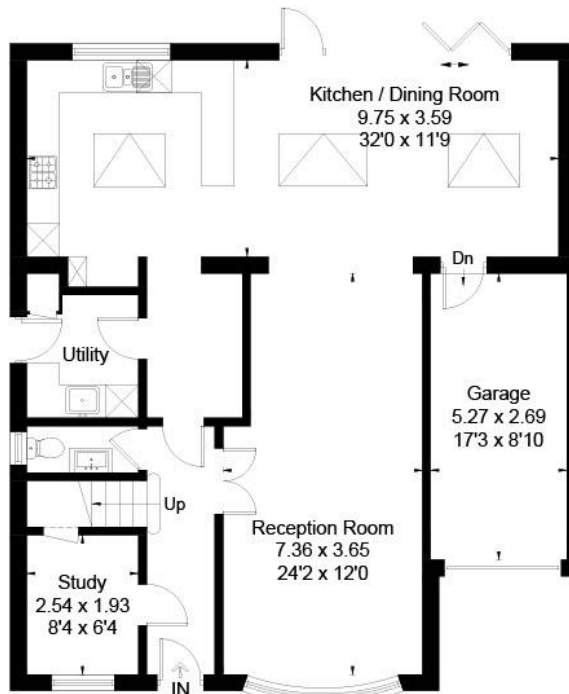
EPC RATING

C

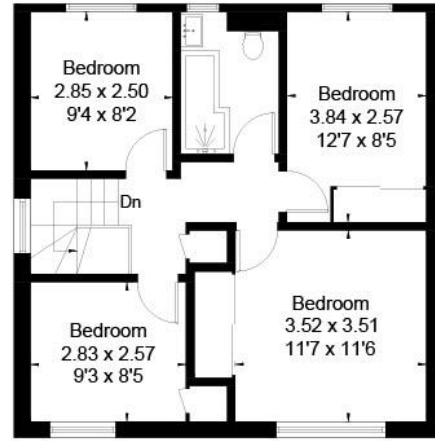




Approximate Area = 160.7 sq m / 1730 sq ft (Including Garage)
Including Limited Use Area (1.0 sq m / 11 sq ft)



Ground Floor



First Floor

Surveyed and drawn in accordance with the International Property Measurement Standards (IPMS 2: Residential)
fourwalls-group.com 322736

Disclaimer: We wish to inform prospective tenants that we have prepared these sales particulars as a general guide. We have not carried out a detailed survey, nor tested the services, appliances and specific fittings. Room sizes are approximate and rounded; they are taken between internal wall surfaces and therefore include cupboards / shelves, etc. Tenant fees apply, see our notification of tenant costs.

Postcode for sat nav: GU20 6EA



The Old Dairy, 7 Updown Hill, Windlesham, Surrey GU20 6AF
enquiries@newtonrowe.co.uk | 01276 986900