



New Road, Ascot

£2,950 pcm



New Road, Ascot, Berkshire SL5 8QA

Situated in a popular residential area, this late Victorian detached cottage with period features has been recently updated to offer spacious modern accommodation.

FEATURES

Attractive Victorian home Gas central heating
Gated driveway
Garage

ACCOMODATION

Entrance hall
Dining Room
Living room
Fitted kitchen/breakfast room
Master bedroom with en-suite
Three further bedrooms
Family bathroom
Downstairs cloakroom

OUTSIDE

Large garden
Driveway parking

COUNCIL TAX

Windsor & Maidenhead - Band E

DEPOSIT PAYABLE

£3,400

EPC RATING

E

FURNISHED/UNFURNISHED

Unfurnished

AVAILABLE

Immediately





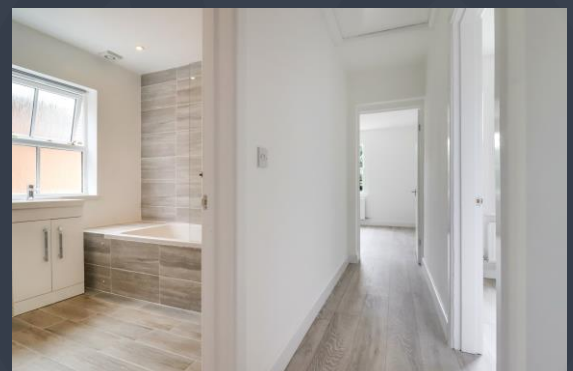
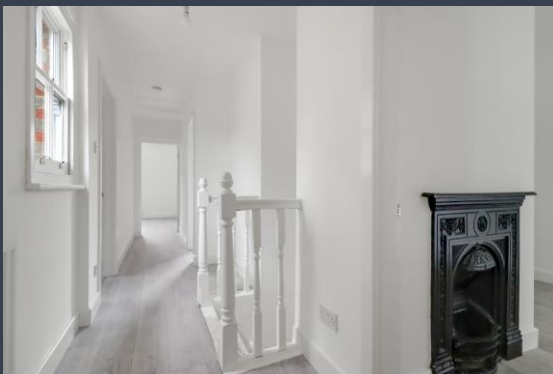
Approximate Gross Internal Area
127.0 sq m / 1367.01 sq ft
(Excludes Garage)
Garage Area 21.0 sq m / 226.04 sq ft



Illustration for identification purposes only, measurements are approximate, not to scale.

Disclaimer: We wish to inform prospective purchasers and tenants that we have prepared these sales particulars as a general guide. We have not carried out a detailed survey, nor tested the services, appliances and specific fittings. Room sizes are approximate and rounded: they are taken between internal wall surfaces and therefore include cupboards / shelves, etc. Accordingly, they should not be relied upon for carpeting, curtains / blinds and kitchen equipment, whether fitted or not, are deemed removable by the vendor unless specifically itemized within these.

Postcode for sat nav: SL5 8QA



NEWTON ROWE
SALES & LETTINGS

The Old Dairy, 7 Updown Hill, Windlesham, Surrey GU20 6AF
enquiries@newtonrowe.co.uk | 01276 986900