



Snows Ride, Windlesham

**£1,400,000**





## **Snows Ride, Windlesham GU20 6DJ**

Dating back to the 1800's Treetops is an impressive, individual period home with over 2500 sq. ft of accommodation within a mature plot of around 1/3 acre in the rural village of Windlesham.

### **FEATURES**

Set back from the road  
Apprx. 1/3 acre plot  
Over 2500 sq ft  
Wood burner  
Period features  
Impressive extension with vaulted ceiling  
and bi-fold doors onto a courtyard patio

### **ACCOMODATION**

4 bedrooms  
2 bath/shower rooms  
4 reception rooms  
Pantry  
Utility  
Cloakroom

### **OUTSIDE**

Barn style double car port  
Gravel driveway  
Mature front and side gardens  
Herb garden

### **LOCAL AUTHORITY**

Surrey Heath – Band G

### **EPC RATING**

C









Approximate Gross Internal Area  
230.49 sq m / 2480.97 sq ft



Ground Floor



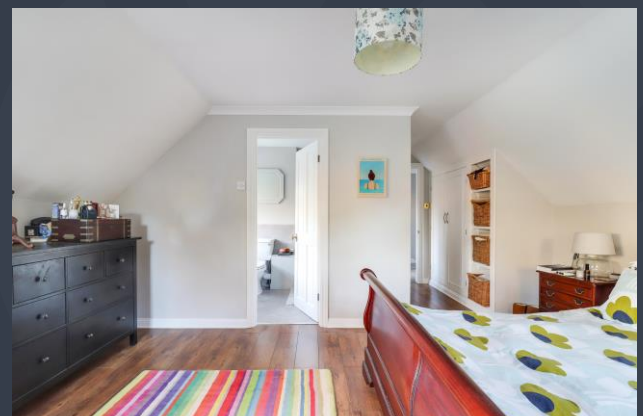
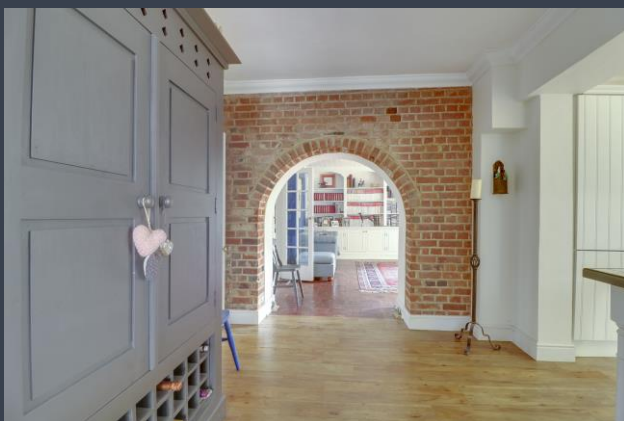
First Floor

Illustration for identification purposes only, measurements are approximate, not to scale.

**Disclaimers:** We wish to inform prospective purchasers that we have prepared these sales particulars as a general guide. We have not carried out a detailed survey, nor tested the services, appliances and specific fittings. Room sizes are approximate and rounded: they are taken between internal wall surfaces and therefore include cupboards / shelves, etc. Accordingly, they should not be relied upon for carpeting, curtains / blinds and kitchen equipment, whether fitted or not, are deemed removable by the vendor unless specifically itemized within these.

**N.B In accordance with the estate agency act we are obliged to point out that the owner of the property is an employee of Newton Rowe Ltd**

**Postcode for sat nav: GU20 6LA**



**NEWTON ROWE**  
SALES & LETTINGS

The Old Dairy, 7 Updown Hill, Windlesham, Surrey GU20 6AF  
enquiries@newtonrowe.co.uk | 01276 986900