



Cooper Road, Windlesham

£675,000



Cooper Road, Windlesham

Offered for sale with no onward chain, this four bedroom detached house with garage is located in the heart of Windlesham village just a few hundred feet from the Field of Remembrance playing fields.

FEATURES

- No onward chain
- Detached
- Double glazing
- Gas central heating
- Walking distance to village shops and pubs

ACCOMODATION

- Entrance hall
- Cloakroom
- Living/dining room
- Conservatory
- Modern kitchen
- Study
- Four bedrooms
- Bathroom

OUTSIDE

- Driveway parking
- Garage with car port
- Front and rear gardens

COUNCIL TAX

Surrey Heath – Band F

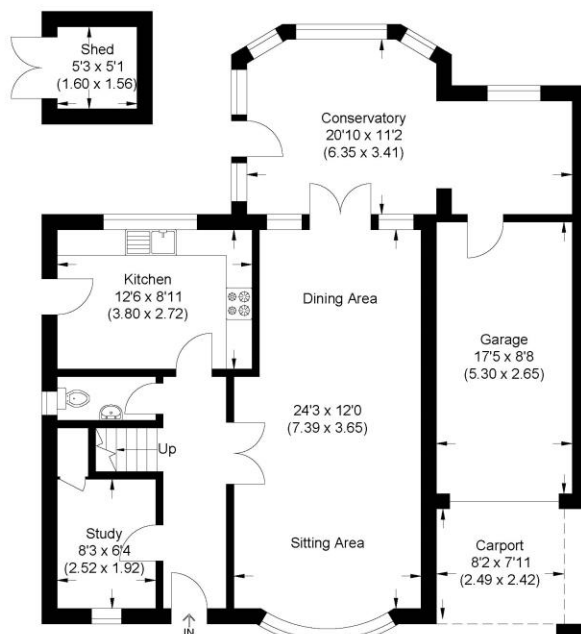
EPC RATING

D

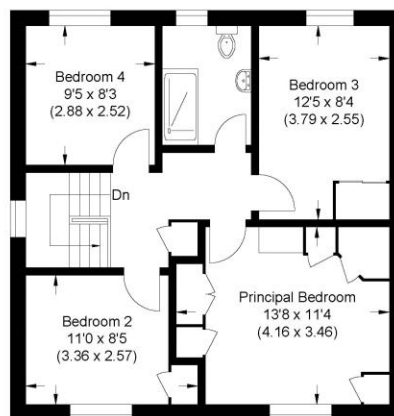




Approximate Gross Internal Area
 140.0 sq m / 1506.94 sq ft
 (Includes Garage & Excluding Shed)
 Garage Area 14.0 sq m / 150.69 sq ft
 Shed Area 2.0 sq m / 21.52 sq ft



Ground Floor

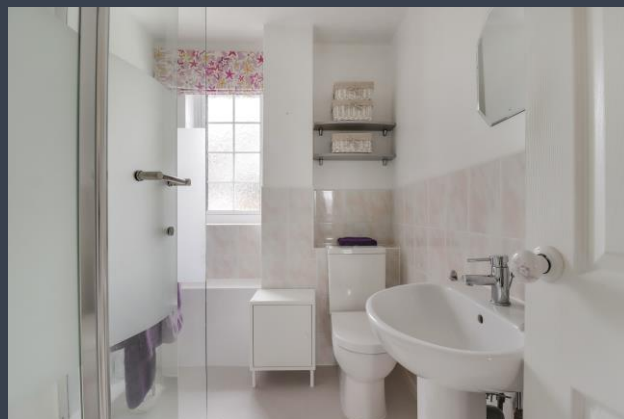


First Floor

Illustration for identification purposes only, measurements are approximate, not to scale.

Disclaimer: We wish to inform prospective purchasers that we have prepared these sales particulars as a general guide. We have not carried out a detailed survey, nor tested the services, appliances and specific fittings. Room sizes are approximate and rounded; they are taken between internal wall surfaces and therefore include cupboards / shelves, etc. Accordingly, they should not be relied upon for carpeting, curtains / blinds and kitchen equipment, whether fitted or not, are deemed removable by the vendor unless specifically itemized within these.

Postcode for sat nav: **GU20 6EA**



NEWTON ROWE
 SALES & LETTINGS

The Old Dairy, 7 Updown Hill, Windlesham, Surrey GU20 6AF
 enquiries@newtonrowe.co.uk | 01276 986900